



TM-2247S 2016-03

Eff w/Serial No. LE073174

Processes



Multiprocess Welding

Description



Arc Welding Power Source

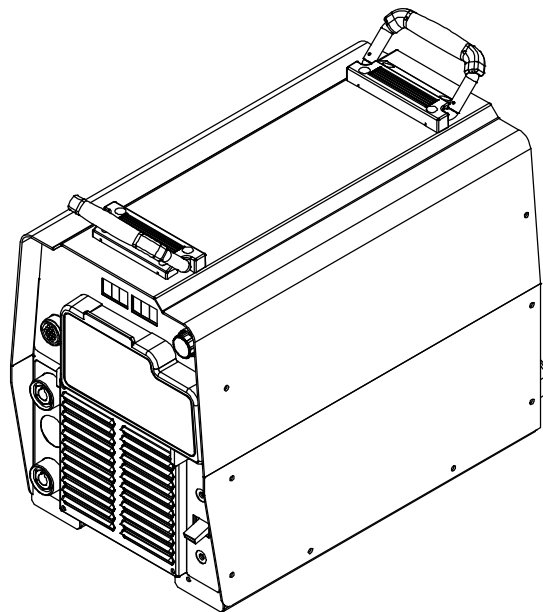
# XMT<sup>®</sup> 350 CC/CV

# Auto-Line<sup>™</sup>

## PARTS LIST

Eff w/Serial No.  
LE073174 Thru MC450892U

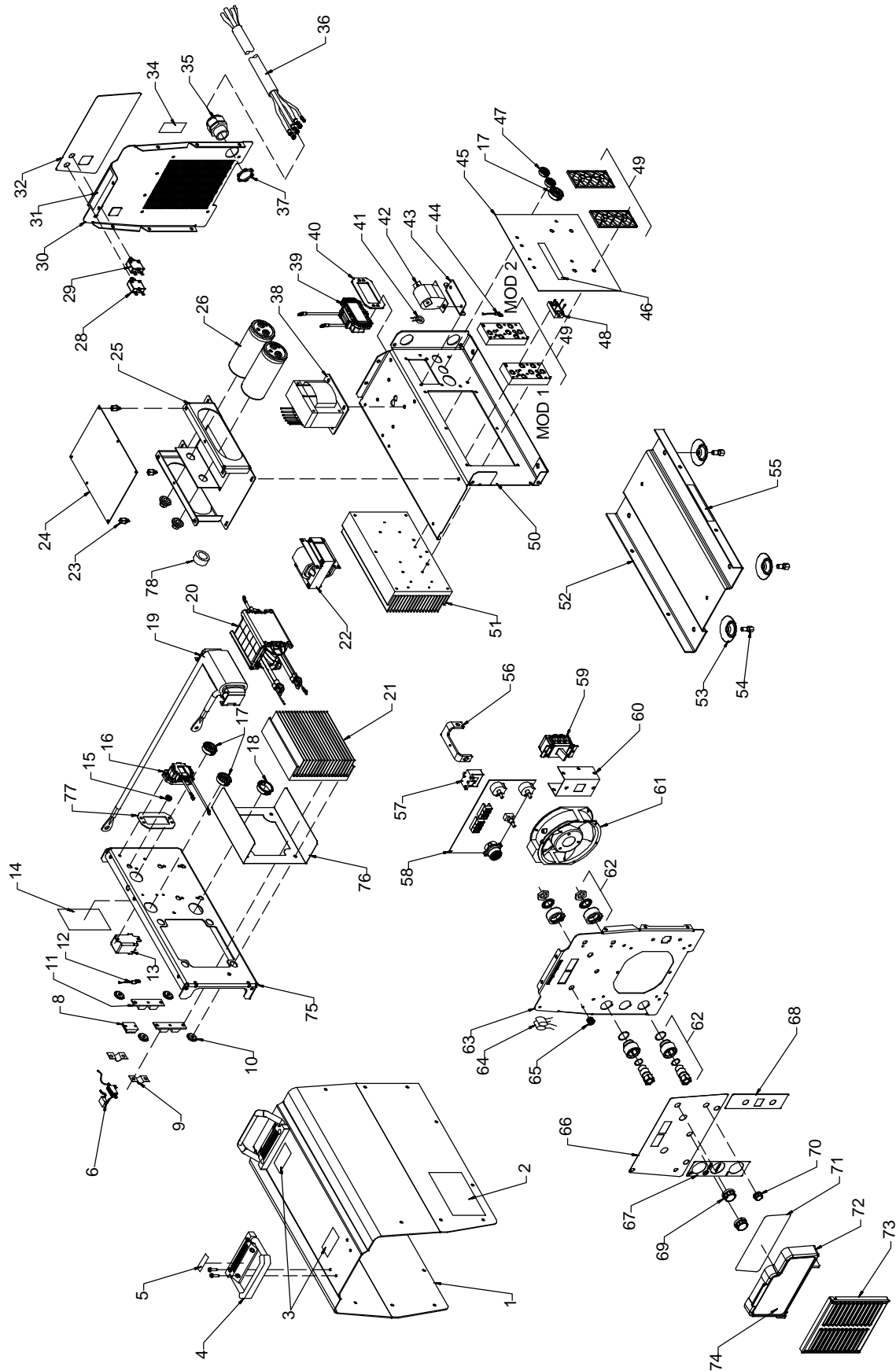
For OM-2247 (212857) Revisions A Thru W



Visit our website at

[www.MillerWelds.com](http://www.MillerWelds.com)

# SECTION 13 – PARTS LIST FOR SERIAL NO. LE073174 THRU MC450892U



Ref. 803 690-J

**Figure 13-1. Parts Assembly**

# Eff w/Serial No. LE073174 Thru MC450892U

Item No.	Dia. Mkgs.	Part No.	Description	Quantity
<b>Figure 13-1. Parts Assembly</b>				
...	1	216034	.. Wrapper (Includes Insulators and Safety Labels)	1
		175256	.. Insulator, Side Rh (Not Shown)	1
		178551	.. Insulator, Side (Not Shown)	1
...	2	134327	.. Label, Warning General Precautionary Static & Wire Feed	2
...	3	138442	.. Label, Caution Falling Equipment Can Cause Injury	2
...	4	195585	.. Handle, Rubberized Carrying	2
...	5	135483	.. Label, Important Remove These Two Handle Screws	2
...	6	R3/C4	196518 .. Resistor/Capacitor (Prior to LH150274A)	1
...	6	R3/C4	233052 .. Resistor/Capacitor (Eff w/LH150274A)	1
...	7	RC4/C5	196510 .. Resistor/Capacitor Deleted (Eff w/LH150274A and following)	1
...	8	SR1	201530 .. Kit, Diode Fast Recovery Bridge	1
...	9		199840 .. Bus Bar, Diode	2
...	10		196355 .. Insulator, Screw	4
...	11	D1,D2	201531 .. Kit, Diode Power Module	2
...	12	RT1	199798 .. Thermistor, NTC 30K Ohm @ 25 Deg C 18In Lead	1
...	13	CR1	198549 .. Relay, Encl 24VDC Spst 35A/300VAC 4Pin Flange Mtg	1
...	14		185835 .. Label, Warning Electric Shock/Exploding Parts (Prior to LG090176A)	1
...	14		227127 .. Label, Warning Electric Shock/Exploding Parts (Eff w/LG090176A)	1
...	15		010546 .. Bushing, Snap-In Nyl .375 Id X .500 Mtg Hole	1
...	16	L4	218020 .. Inductor, Boost	1
...	17		179276 .. Bushing, Snap-In Nyl 1.000 Id X 1.375 Mtg Hole Cent	3
...	18		170647 .. Bushing, Snap-In Nyl 1.312 Id X 1.500 Mtg Hole	1
...	19	L3	212150 .. Inductor, Output	1
...	20	T1	212132 .. XFMR, HF Litz/Litz W/Boost	1
...	21		212197 .. Heat Sink, Lh Rect (Prior to LH150274A)	1
...	21		225097 .. Heat Sink, Lh Rect (Eff w/LH150274A)	1
...	22	L1	212091 .. Inductor, Input	1
...	23		083147 .. Grommet, Scr No 8/10 Panel Hole .312 Sq .500 High	4
...	24	PC1	218007 .. Circuit Card Assy, Control W/Program (Prior to LK450041A)	1
...	24	PC1	242812 .. Circuit Card Assy, Control W/Program (Eff w/LK450041A)	1
...	24	PC1	◆223656 .. Circuit Card Assy, Control/Aux Power W/Program (223 656 replaces 218 007 on units with 115 volt auxiliary power option prior to LF056668) (Prior to LK450041A)	1
...	24	PC1	◆242341 .. Circuit Card Assy, Control/Aux Power W/Program (Eff w/LK450041A)	1
		216113	.. Stand-Off Support, PC Card .187 Dia W/P&I .375	2
		PLG1	115091 .. Housing Plug+Pins (Service Kit) RC1	1
		PLG2	201665 .. Housing Plug+Pins (Service Kit) RC2	1
		PLG3	131056 .. Housing Plug+Pins (Service Kit) RC3	1
		PLG5	131204 .. Housing Plug+Pins (Service Kit) RC5	1
		PLG7	131054 .. Housing Plug+Pins (Service Kit) RC7	1
		PLG8	131054 .. Housing Plug+Pins (Service Kit) RC8	1
		PLG9	115093 .. Housing Plug+Pins (Service Kit) RC9	1
		PLG10	115094 .. Housing Plug+Pins (Service Kit) RC10	1
		PLG11	115094 .. Housing Plug+Pins (Service Kit) RC11	1
		PLG12	115092 .. Housing Plug+Pins (Service Kit) RC12	1
...	25		212072 .. Bracket, Mtg Capacitor/Pc Board	1
...	26	C12,13	219930 .. Kit, Capacitor Elclt Replacement (Includes)	1
		217941	.. Capacitor, Elclt 1800 Uf 500 VDC Can 2.52 Dia (Prior to LF320579)	2
		193738	.. Capacitor, Elclt 1800 Uf 500 VDC Can 2.52 Dia (Eff w/LF320579)	2
		217040	.. Nut, Nylon M12 Thread Capacitor Mounting	2
		RC2	◆604176 .. Rcpt, Str Dx Grd 2P3W 15A 125V *5-15R	1
...	28	CB2	083432 .. Supplementary Protector, Man Reset 1P 10A 250VAC Frict	1

+When ordering a component originally displaying a precautionary label, the label should also be ordered.

◆Part of 115V Aux Power Option. (Not Available On French Units)

◆◆Part of Tweco Type Connector Option. (Not Available On French Units)

**BE SURE TO PROVIDE MODEL AND SERIAL NUMBER WHEN ORDERING REPLACEMENT PARTS.**

# Eff w/Serial No. LE073174 Thru MC450892U

Item No.	Dia. Mkgs.	Part No.	Description	Quantity
<b>Figure 13-1. Parts Assembly (Continued)</b>				
29	CB1	089807	Supplementary Protector, Man Reset 1P 2.5A 250VAC Frict	1
29	CB1	◆083432	Supplementary Protector, Man Reset 1P 10A 250VAC Frict	1
30		+212071	Panel, Rear Standard	1
30		◆+212202	Panel, Rear	1
31		126026	Label, Warning Electric Shock Can Kill Significant	1
32		212079	Nameplate, Rear	1
32		◆212075	Nameplate, Rear Aux	1
		◆175282	Cover, Receptacle Weatherproof Duplex Rcpt (Prior to LK190017A)	1
		◆217297	Cover, Receptacle Weatherproof Duplex Rcpt (Eff w/LK190017A)	1
34		217480	Label, Warning Incorrect Connections	1
35		215980	Bushing, Strain Relief .709/.984 Id X1.375 Mtg Hole	1
36		212434	Cable, Power 12 Ft 8Ga 4C (Non-Stripped End) Prior to LG430267A	1
36		219487	Cable, Power Eff w/LG430267A	1
37		182445	Nut, Conduit 1.000 Npt Pld 1.730 Od X .200 Thk (Prior to /LH460039A)	1
37		234126	Nut, Conduit 1.000 Npt Knurled (Eff w/LH460039A)	1
38	T2	211109	XFMR, Control 665V 336Va Syn Aux Pwr	1
38	T2	◆211968	XFMR, Control Toroidal 665 VAC Pri 1536 Va 60 Hz (Prior to MB520506A)	1
38	T2	◆251003	XFMR, Control Toroidal 665 VAC Pri 1536 Va 60 Hz (Eff w/MB520506A)	1
		◆212947	Plate, Mtg Toroid XFMR	1
39	L2	218018	Inductor, Pre-Regulator	1
40		218566	Gasket, Inductor Mounting	1
41	CT1	196231	XMFR, Current Sensing 200/1	1
42	C15	196143	Capacitor, Polyp Met Film 16. Uf 400 VAC 10%	1
43		216117	Bracket, Mtg Capacitor Series	1
44	RT2	199798	Thermistor, Ntc 30K Ohm @ 25 Deg C 18in Lead	1
45	PC2	225442	Circuit Card Assy, Interconnect	1
46		126026	Label, Warning Electric Shock Can Kill Significant	1
		223343	Clip, Wire Stdf .40-.50 Bndl .156Hole .031-.078Thk	2
	PLG13	130203	Housing Plug+Pins (Service Kit) RC1	1
	PLG14	201665	Housing Plug+Pins (Service Kit) RC2	1
	PLG15	115092	Housing Plug+Pins (Service Kit) RC3	1
	PLG20	115093	Housing Plug+Pins (Service Kit) RC6	1
47		153403	Bushing, Snap-In Nyl .750 Id X 1.000 Mtg Hole Cent	2
48	RM1	205751	Module, Power Resistor W/Plug	1
49	MOD1, MOD2	266888	Kit, IGBT Module & Interconnect Board (Includes MOD1, MOD2, And Interconnect Board PC2)	1
50		212206	Windtunnel, Rh	1
51		196330	Heat Sink, Power Module	1
52		+175132	Base	1
53		173693	Foot, Mtg Unit (Prior to LH150274A)	4
53		229325	Foot, Mtg Unit (Eff w/LH150274A)	4
54		176736	Screw, Mtg Foot	4
55		153178	Label, Warning Exploding Parts Can Serious Injury	1
56		212074	Bus Bar, Output	1
57	HD1	182918	Transducer, Current 400A Module Supply V +/- 15V	1
58	PC3	218008	Circuit Card Assy, Front Panel & Display W/Program (Prior to LK190017A)	1
58	PC3	234564	Circuit Card Assy, Front Panel & Display W/Program (Eff w/LK190017A thru MB230199A)	1

+When ordering a component originally displaying a precautionary label, the label should also be ordered.

◆Part of 115V Aux Power Option. (Not Available On French Units)

◆◆Part of Tweco Type Connector Option. (Not Available On French Units)

BE SURE TO PROVIDE MODEL AND SERIAL NUMBER WHEN ORDERING REPLACEMENT PARTS.

# Eff w/Serial No. LE073174 Thru MC450892U

Item No.	Dia. Mkgs.	Part No.	Description	Quantity
<b>Figure 13-1. Parts Assembly (Continued)</b>				
58	PC3	243572	Circuit Card Assy, Front Panel & Display W/Program (Eff w/MB230200A)	1
	PLG18	131204	Housing Plug+Pins (Service Kit) RC2	1
	RC50	210233	Rcpt, W/Pins (Service Kit)	1
	PLG21	212088	Plug, W/Leads	1
	RC21	167640	Housing Plug+Pins (Service Kit)	1
59	S1	128756	Switch, Tgl 3Pst 40A 600VAC Scr Term Wide Tgl (Prior to LH460039A)	1
59	S1	231191	Switch, Tgl 3Pst 50A 600VAC Scr Term Wide Tgl (Eff w/LH460039A thru MA430011A)	1
59	S1	244920	Switch, Tgl 3Pst 40A 600VAC Scr Term Wide Tgl (Eff w/MA430012A)	1
60		176226	Insulator, Switch Power	1
61	FM1	196313	Fan, Muffin 115V 50/60Hz 3000 RPM 6.378 Mtg Holes	1
	PLG16	131054	Housing Plug+Pins (Service Kit)	1
	RC16	135635	Housing Plug+Pins (Service Kit)	1
62		208967	Rcpt Assy, Tw Lk Insul Fem (Dinse Type) 50/70 Series (Includes)	2
		208968	Rcpt, Tw Lk Insul W/O-Ring	1
		185712	Insulator, Bulkhead Front	1
		185713	Insulator, Bulkhead Rear	1
		185714	Washer, Tooth 22mmid X 31.5mmod 1.310-1mmt Intern	1
		185717	Nut, M20-1.5 1.00Hex .19h Brs Locking	1
		185718	O-Ring, 0.989 Id X 0.070 H	1
		186228	O-Ring, 0.739 Id X 0.070 H	1
		178548	Terminal, Connector Friction	1
62		◆◆218183	Rcpt Assy, Tw Lk Insul Fem (Tweco Type) (Fac-op) (Includes)	2
		209473	Receptacle, Twist Lock Tweco Style (Female) Power	1
		185712	Insulator, Bulkhead Front	1
		185713	Insulator, Bulkhead Rear	1
		185714	Washer, Tooth 22mmid X 31.5mmod 1.310-1mmt Intern	1
		185717	Nut, M20-1.5 1.00Hex .19h Brs Locking	1
		185718	O-Ring, 0.989 Id X 0.070 H	1
		186228	O-Ring, 0.739 Id X 0.070 H	1
		178548	Terminal, Connector Friction	1
63		212070	Panel, Front Standard	1
64	C6,7	214749	Capacitor Assy, W/Plug & Leads (Voltage Feedback)	1
65		216112	Fastener, Panel Receptacle Quick Access	2
66			Nameplate (Order by Model and Serial Number)	1
67			Nameplate, Connection (Order by Model and Serial Number)	1
68			Nameplate, Power (Order by Model and Serial Number)	1
69		174991	Knob, Pointer 1.250 Dia X .250 Id W/Spring Clip-.21	2
70		174992	Knob, Pointer .840 Dia X .250 Id W/Spring Clip-.21	1
71		212949	Label, Process XMT 350 Auto-Line (Prior to LK230085A)	1
71		239916	Label, Process (Eff w/LK230085A)	1
72		218041	Door, W/Quick Access Ball Fasteners	1
73		175138	Box, Louver	1
74			Label (Order by Model and Serial Number)	1
75		+212207	Windtunnel, Lh	1
76		211503	Insulator, Heat Sink	1
77		227746	Gasket, Inductor Mounting (Eff w/LG090176A)	1
78	L8	241027	Core, Toroidal (Eff w/MB380191A)	1

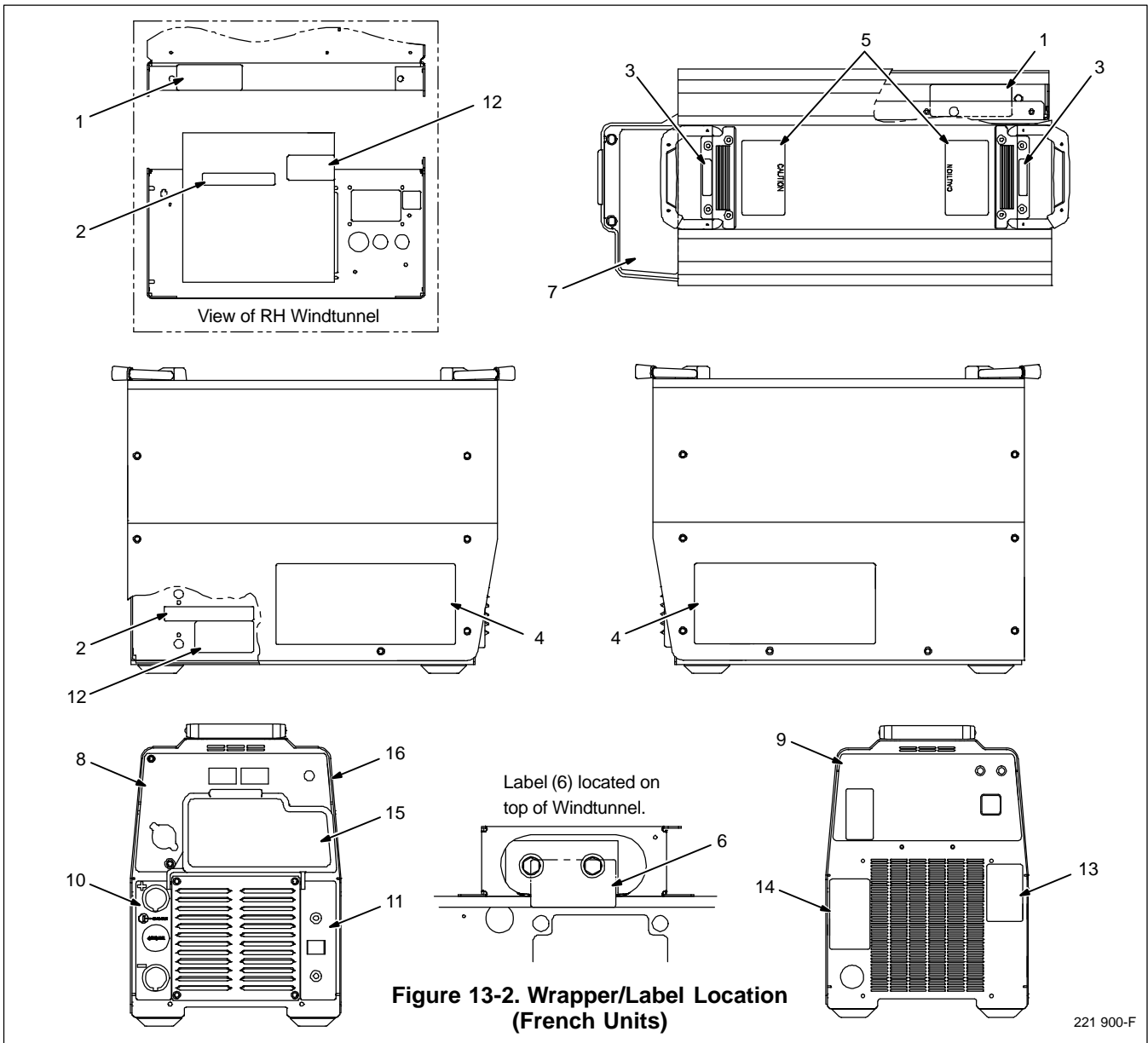
+When ordering a component originally displaying a precautionary label, the label should also be ordered.

◆Part of 115V Aux Power Option. (Not Available On French Units)

◆◆Part of Tweco Type Connector Option. (Not Available On French Units)

**BE SURE TO PROVIDE MODEL AND SERIAL NUMBER WHEN ORDERING REPLACEMENT PARTS.**

# Eff w/Serial No. LE073174 Thru MC450892U



**Figure 13-2. Wrapper/Label Location (French Units)**

221 900-F

Item No.	Part No.	Description	Quantity
<b>Figure 13-2. Wrapper/Label Location - French Units</b>			
1	218545	Label, Warning Exploding Parts Can Serious Inj (French)	2
2	126026	Label, Warning Electric Shock Can Kill Significant	2
3	218542	Label, Important Remove These Two Handle Screws (French)	2
4	217136	Label, Warning Electric Shock (English/French)	2
5	218541	Label, Caution Falling Equip Can Cause Injury (French)	2
6	218544	Label, Warning Electric Shock Can Kill (French)	1
7	244870	Label, Process (French)	1
8		Nameplate, (French) (Order by Model and Serial Number)	1
9		Nameplate, Rear (French) (Order by Model and Serial Number)	1
10		Nameplate, Connection/CE (Order by Model and Serial Number)	1
11		Nameplate, Power/CE (Order by Model and Serial Number)	1
12	220022	Label, Warning Electric Shock Can Kill (French)	2
13	220023	Label, Warning Incorrect Connections (French)	1
14	217480	Label, Warning Incorrect Connections	1
15		Label, (Order by Model and Serial Number)	1
16	221787	Wrapper (Includes Insulators and Safety Labels) (French)	1



TM-2247S 2016-03

Eff w/Serial No. LE073174

Processes



Multiprocess Welding

Description



Arc Welding Power Source

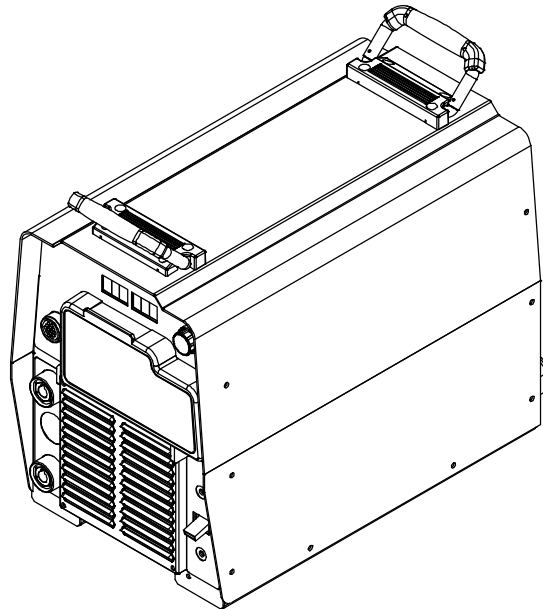
# XMT<sup>®</sup> 350 CC/CV

# Auto-Line<sup>™</sup>

## PARTS LIST

Eff w/Serial No.  
MC450893U Thru ME120121U

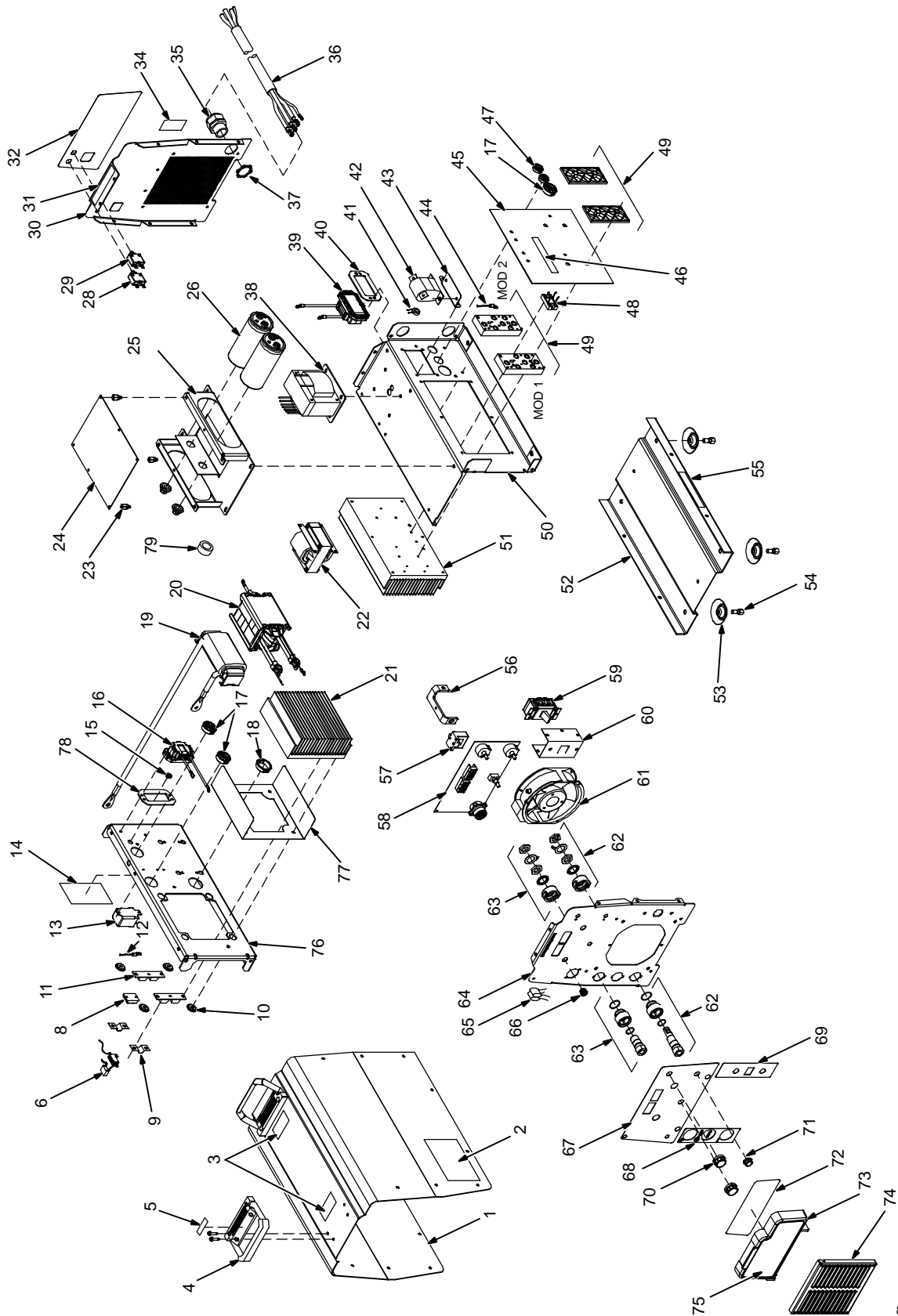
For OM-2247 (212857) Revisions X Thru AA



Visit our website at

[www.MillerWelds.com](http://www.MillerWelds.com)

# SECTION 14 – PARTS LIST FOR SERIAL NO. MC450893U THRU ME120120U



803 690-K

Figure 14-1. Parts Assembly



# Eff w/Serial No. MC450893U Thru ME120120U

Item No.	Dia. Mkgs.	Part No.	Description	Quantity
<b>Figure 14-1. Parts Assembly</b>				
...	1	216034	.. Wrapper (Includes Insulators and Safety Labels)	1
		175256	.. Insulator, Side Rh (Not Shown)	1
		178551	.. Insulator, Side (Not Shown)	1
...	2	134327	.. Label, Warning General Precautionary Static & Wire Feed	2
...	3	138442	.. Label, Caution Falling Equip Can Cause Injury	2
...	4	195585	.. Handle, Rubberized Carrying (Prior to MC510003U)	2
...	4	208015	.. Handle, Rubberized Carrying (Eff w/MC510003U)	2
...	5	135483	.. Label, Important Remove These Two Handle Screws	2
...	6	R3/C4	233052 .. Resistor/Capacitor	1
...	7	Deleted		
...	8	SR1	201530 .. Kit, Diode Fast Recovery Bridge	1
...	9		199840 .. Bus Bar, Diode	2
...	10		196355 .. Insulator, Screw	4
...	11	D1,D2	201531 .. Kit, Diode Power Module	2
...	12	RT1	199798 .. Thermistor, NTC 30K Ohm @ 25 Deg C 18In Lead	1
...	13	CR1	255744 .. Relay, Encl 24VDC Spst 30A/300VAC 4Pin Flange Mtg	1
...	14		227127 .. Label, Warning Electric Shock/Exploding Parts	1
...	15		010546 .. Bushing, Snap-In Nyl .375 Id X .500 Mtg Hole	1
...	16	L4	218020 .. Inductor, Boost	1
...	17		179276 .. Bushing, Snap-In Nyl 1.000 Id X 1.375 Mtg Hole Cent	3
...	18		170647 .. Bushing, Snap-In Nyl 1.312 Id X 1.500 Mtg Hole	1
...	19	L3	251396 .. Inductor, Output	1
...	20	T1	251394 .. XFMR, HF Litz/Litz W/Boost	1
...	21		225097 .. Heat Sink, Lh Rect	1
...	22	L1	212091 .. Inductor, Input	1
...	23		083147 .. Grommet, Scr No 8/10 Panel Hole .312 Sq .500 High	4
...	24	PC1	242812 .. Circuit Card Assy, Control W/Program	1
...	24	PC1	◆242341 .. Circuit Card Assy, Control/Aux Power W/Program	1
			216113 .. Stand-Off Support, PC Card .187 Dia W/P&I .375	2
		PLG1	115091 .. Housing Plug+Pins (Service Kit) RC1	1
		PLG2	201665 .. Housing Plug+Pins (Service Kit) RC2	1
		PLG3	131056 .. Housing Plug+Pins (Service Kit) RC3	1
		PLG5	131204 .. Housing Plug+Pins (Service Kit) RC5	1
		PLG7	131054 .. Housing Plug+Pins (Service Kit) RC7	1
		PLG8	131054 .. Housing Plug+Pins (Service Kit) RC8	1
		PLG9	115093 .. Housing Plug+Pins (Service Kit) RC9	1
		PLG10	115094 .. Housing Plug+Pins (Service Kit) RC10	1
		PLG11	115094 .. Housing Plug+Pins (Service Kit) RC11	1
		PLG12	115092 .. Housing Plug+Pins (Service Kit) RC12	1
...	25		212072 .. Bracket, Mtg Capacitor/Pc Board	1
...	26	C12,13	219930 .. Kit, Capacitor Elctl Replacement (Includes)	1
			193738 .. Capacitor, Elctl 1800 Uf 500 VDC Can 2.52 Dia	2
			217040 .. Nut, Nylon M12 Thread Capacitor Mounting	2
		RC2	◆604176 .. Rcpt, Str Dx Grd 2P3W 15A 125V *5-15R	1
...	28	CB2	083432 .. Supplementary Protector, Man Reset 1P 10A 250VAC Frict	1
...	29	CB1	089807 .. Supplementary Protector, Man Reset 1P 2.5A 250VAC Frict	1
...	29	CB1	◆083432 .. Supplementary Protector, Man Reset 1P 10A 250VAC Frict	1
...	30		+212071 .. Panel, Rear Standard	1
...	30		◆+212202 .. Panel, Rear	1
...	31		126026 .. Label, Warning Electric Shock Can Kill Significant	1

+When ordering a component originally displaying a precautionary label, the label should also be ordered.

◆Part of 115V Aux Power Option. (Not Available On French Units)

BE SURE TO PROVIDE MODEL AND SERIAL NUMBER WHEN ORDERING REPLACEMENT PARTS.

# Eff w/Serial No. MC450893U Thru ME120120U

Item No.	Dia. Mkgs.	Part No.	Description	Quantity
<b>Figure 14-1. Parts Assembly (Continued)</b>				
32			Nameplate, Rear (Order by Model and Serial Number)	1
32		◆	Nameplate, Rear Aux (Order by Model and Serial Number)	1
		◆217297	Cover, Receptacle Weatherproof Duplex Rcpt	1
34		217480	Label, Warning Incorrect Connections	1
35		215980	Bushing, Strain Relief .709/.984 Id X1.375 Mtg Hole	1
36		219487	Cable, Power 12 Ft 8Ga 4C (Non-Stripped End)	1
37		234126	Nut, Conduit 1.000 Npt Knurled	1
38	T2	211109	XFMR, Control 665V 336Va Syn Aux Pwr	1
38	T2	◆251003	XFMR, Control Toroidal 665 VAC Pri 1536 VA 60 Hz	1
		◆212947	Plate, Mtg Toroid XFMR	1
39	L2	218018	Inductor, Pre-Regulator	1
40		218566	Gasket, Inductor Mounting	1
41	CT1	196231	XMFR, Current Sensing 200/1	1
42	C15	196143	Capacitor, Polyp Met Film 16. Uf 400 VAC 10%	1
43		216117	Bracket, Mtg Capacitor Series	1
44	RT2	199798	Thermistor, Ntc 30K Ohm @ 25 Deg C 18in Lead	1
45	PC2	225442	Circuit Card Assy, Interconnect (Prior to ME100269U)	1
45	PC2	263676	Circuit Card Assy (Eff/w ME100269U) (Includes)	1
46		126026	Label, Warning Electric Shock Can Kill Significant	1
		223343	Clip, Wire Stdf .40-.50 Bndl .156Hole .031-.078Thk	2
	PLG13	130203	Housing Plug+Pins (Service Kit) RC1	1
	PLG14	201665	Housing Plug+Pins (Service Kit) RC2	1
	PLG15	115092	Housing Plug+Pins (Service Kit) RC3	1
	PLG20	115093	Housing Plug+Pins (Service Kit) RC6	1
47		153403	Bushing, Snap-In Nyl .750 Id X 1.000 Mtg Hole Cent	2
48	RM1	205751	Module, Power Resistor W/Plug	1
49	MOD1, MOD2	266888	Kit, IGBT Module & Interconnect Board (Prior to ME100269U) (Includes MOD1, MOD2, And Interconnect Board PC2)	1
49	MOD1, MOD2	261556	Kit, Input/Pre-Regulator And Inverter Module (Eff w/ME100269U) (Includes MOD1, MOD2)	1
50		212206	Windtunnel, Rh	1
51		196330	Heat Sink, Power Module	1
52		+175132	Base	1
53		229325	Foot, Mtg Unit	4
54		176736	Screw, Mtg Foot	4
55		153178	Label, Warning Exploding Parts Can Serious Injury	1
56		212074	Bus Bar, Output	1
57	HD1	182918	Transducer, Current 400A Module Supply V +/- 15V	1
58	PC3	243572	Circuit Card Assy, Front Panel & Display W/Program	1
	PLG18	131204	Housing Plug+Pins (Service Kit) RC2	1
	RC50	210233	Rcpt, W/Pins (Service Kit)	1
	PLG21	212088	Plug, W/Leads	1
	RC21	167640	Housing Plug+Pins (Service Kit)	1
59	S1	244920	Switch, Tgl 3Pst 40A 600VAC Scr Term Wide Tgl	1
60		176226	Insulator, Switch Power	1
61	FM1	196313	Fan, Muffin 115V 50/60Hz 3000 Rpm 6.378 Mtg Holes	1
	PLG16	131054	Housing Plug+Pins (Service Kit)	1
	RC16	135635	Housing Plug+Pins (Service Kit)	1

+When ordering a component originally displaying a precautionary label, the label should also be ordered.

◆Part of 115V Aux Power Option. (Not Available On French Units)

**BE SURE TO PROVIDE MODEL AND SERIAL NUMBER WHEN ORDERING REPLACEMENT PARTS.**

# Eff w/Serial No. MC450893U Thru ME120120U

Item No.	Dia. Mkgs.	Part No.	Description	Quantity
<b>Figure 14-1. Parts Assembly (Continued)</b>				
62		258711	Rcpt Assy, Tw Lk Insul Fem (Dinse) Bolted (Includes)	1
		257994	Rcpt, Tw Lk Insul w/o-ring	1
		250037	Insulator, Bulkhead Front	1
		250039	Insulator, Bulkhead Rear	1
		185714	Washer, Tooth 22Mmid X 31.5Mmod 1.310-1Mmt Intern	1
		185717	Nut, M20-1.5 1.00Hex .19h Brs Locking	2
		185718	O-Ring, 0.989 Id X 0.070 H	1
		186228	O-Ring, 0.739 Id X 0.070 H	1
		178548	Terminal,Connector Friction	1
62		◆◆258713	Rcpt Assy, Tw Lk Insul Fem (Tweco) Bolted (Includes)	1
		250040	Receptacle, Twist Lock Tweco .890 OD Bolted	1
		250037	Insulator, Bulkhead Front	1
		250039	Insulator, Bulkhead Rear	1
		185714	Washer, Tooth 22Mmid X 31.5Mmod 1.310-1Mmt Intern	1
		185717	Nut, M20-1.5 1.00Hex .19H Brs Locking	2
		185718	O-Ring, 0.989 Id X 0.070 H	1
		186228	O-Ring, 0.739 Id X 0.070 H	1
		178548	Terminal,Connector Friction	1
63		258710	Rcpt Assy, Tw Lk Insul Fem (Dinse) (Includes)	1
		257995	Rcpt, Tw Lk Insul w/o-ring	1
		250037	Insulator, Bulkhead Front	1
		250039	Insulator, Bulkhead Rear	1
		185714	Washer, Tooth 22Mmid X 31.5Mmod 1.310-1Mmt Intern	1
		185717	Nut, M20-1.5 1.00Hex .19H Brs Locking	2
		185718	O-Ring, 0.989 Id X 0.070 H	1
		186228	O-Ring, 0.739 Id X 0.070 H	1
		178548	Terminal,Connector Friction	1
63		◆◆258712	Rcpt Assy, Tw Lk Insul Fem (Tweco) (Includes)	1
		250041	Receptacle, Twist Lock Tweco .890 OD	1
		250037	Insulator, Bulkhead Front	1
		250039	Insulator, Bulkhead Rear	1
		185714	Washer, Tooth 22Mmid X 31.5Mmod 1.310-1Mmt Intern	1
		185717	Nut, M20-1.5 1.00Hex .19H Brs Locking	2
		185718	O-Ring, 0.989 Id X 0.070 H	1
		186228	O-Ring, 0.739 Id X 0.070 H	1
		178548	Terminal,Connector Friction	1
64		212070	Panel, Front Standard	1
65	C6,7	214749	Capacitor Assy, W/Plug & Leads (Voltage Feedback)	1
66		216112	Fastener, Panel Receptacle Quick Access	2
67			Nameplate (Order by Model and Serial Number)	1
68			Nameplate, Connection (Order by Model and Serial Number)	1
69			Nameplate, Power (Order by Model and Serial Number)	1
70		174991	Knob, Pointer 1.250 Dia X .250 Id W/Spring Clip-.21	2
71		174992	Knob, Pointer .840 Dia X .250 Id W/Spring Clip-.21	1
72		239916	Label, Process	1
73		218041	Door, W/Quick Access Ball Fasteners	1
74		175138	Box, Louver	1
75			Label, (Order by Model and Serial Number)	1
76		+212207	Windtunnel, Lh	1
77		211503	Insulator, Heat Sink	1
78		227746	Gasket, Inductor Mounting	1
79	L8	241027	Core, Toroidal	1

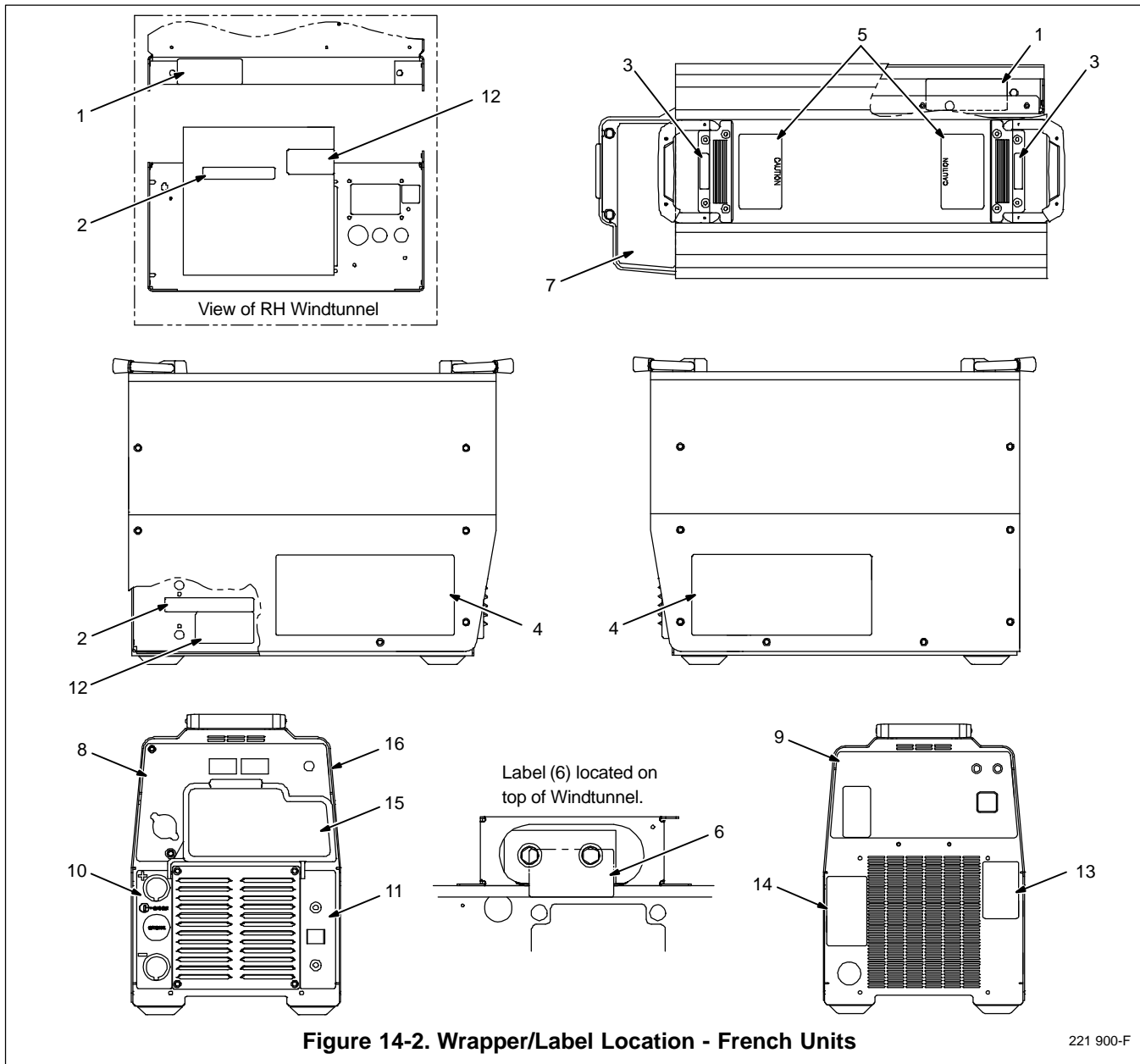
+When ordering a component originally displaying a precautionary label, the label should also be ordered.

◆Part of 115V Aux Power Option. (Not Available On French Units)

◆◆Part of Tweco Type Connector Option. (Not Available On French Units)

**BE SURE TO PROVIDE MODEL AND SERIAL NUMBER WHEN ORDERING REPLACEMENT PARTS.**

# Eff w/Serial No. MC450893U Thru ME120120U



**Figure 14-2. Wrapper/Label Location - French Units**

221 900-F

Item No.	Part No.	Description	Quantity
<b>Figure 14-2. Wrapper/Label Location - French Units</b>			
1	218545	Label, Warning Exploding Parts Can Serious Inj (French)	2
2	126026	Label, Warning Electric Shock Can Kill Significant	2
3	218542	Label, Important Remove These Two Handle Screws (French)	2
4	217136	Label, Warning Electric Shock (English/French)	2
5	218541	Label, Caution Falling Equip Can Cause Injury (French)	2
6	218544	Label, Warning Electric Shock Can Kill (French)	1
7	244870	Label, Process (French)	1
8		Nameplate, (French) (Order by Model and Serial Number)	1
9		Nameplate, Rear (French) (Order by Model and Serial Number)	1
10		Nameplate, Connection/CE (Order by Model and Serial Number)	1
11		Nameplate, Power/CE (Order by Model and Serial Number)	1
12	220022	Label, Warning Electric Shock Can Kill (French)	2
13	220023	Label, Warning Incorrect Connections (French)	1
14	217480	Label, Warning Incorrect Connections	1
15		Label, (Order by Model and Serial Number)	1
16	221787	Wrapper (Includes Insulators and Safety Labels) (French)	1



TM-2247S 2016-03

Eff w/Serial No. LE073174

Processes



Multiprocess Welding

Description



Arc Welding Power Source

# XMT<sup>®</sup> 350 CC/CV

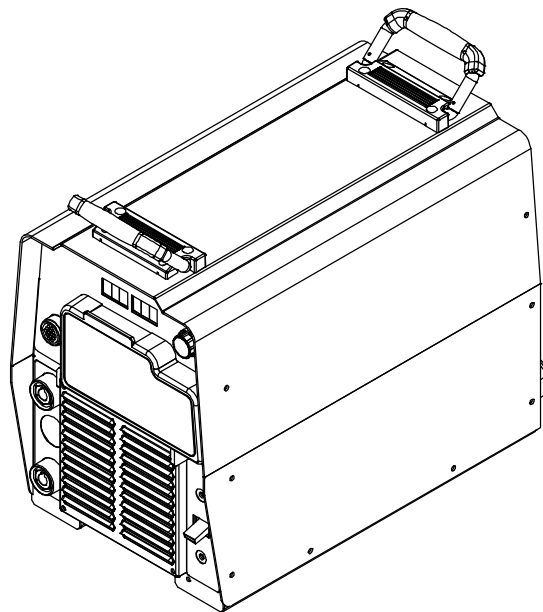
# Auto-Line<sup>™</sup>

## PARTS LIST

Eff w/Serial No.

**ME120121U And Following**

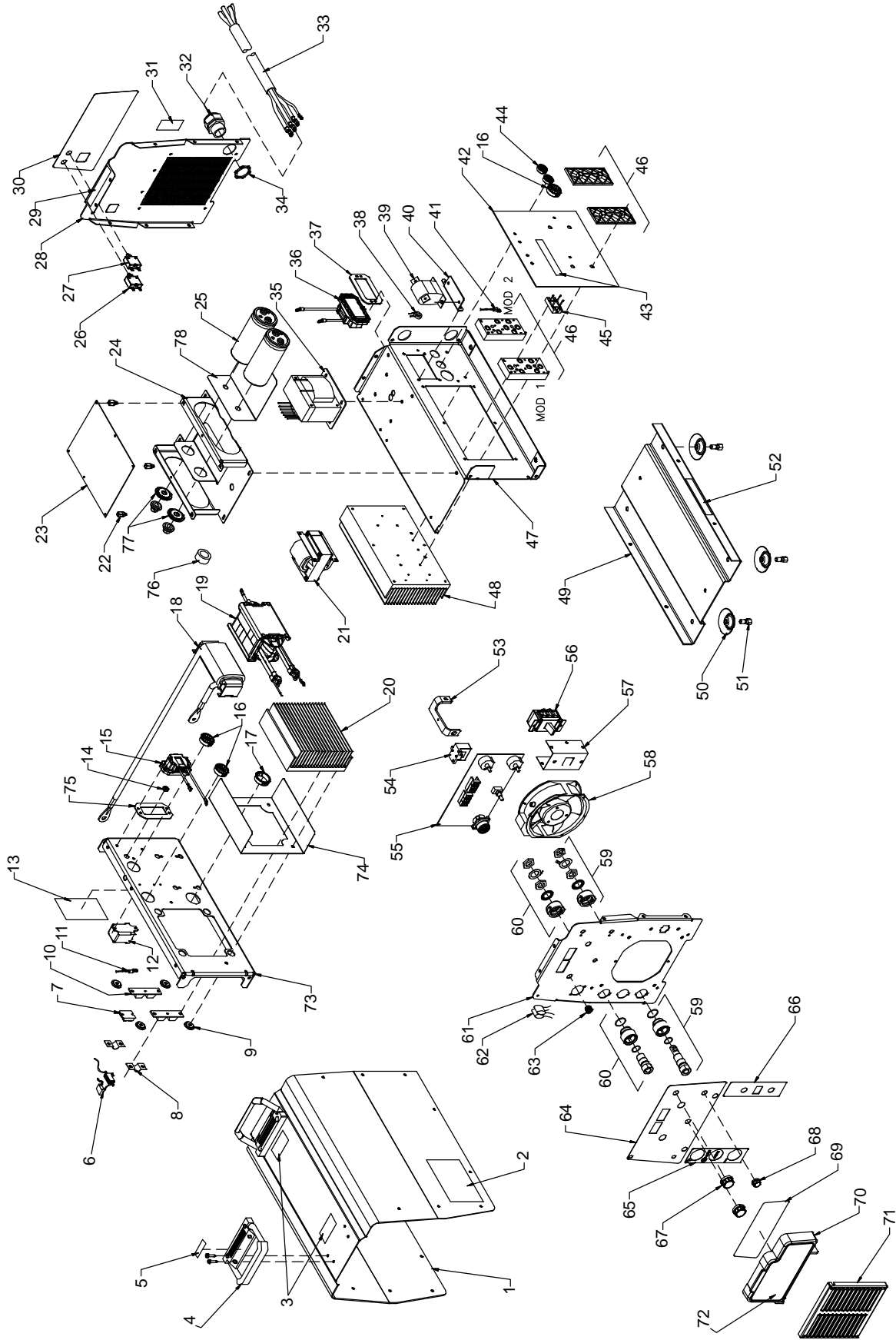
For OM-2247 (212857) Revisions AB And Following



Visit our website at

[www.MillerWelds.com](http://www.MillerWelds.com)

# SECTION 15 – PARTS LIST FOR SERIAL NO. ME120121U AND FOLLOWING



**Figure 15-1. Parts Assembly**

803 690-N

# Eff w/Serial No. ME120121U And Following

Item No.	Dia. Mkgs.	Part No.	Description	Quantity
<b>Figure 15-1. Parts Assembly</b>				
...	1	216034	.. Wrapper (Includes Insulators and Safety Labels)	1
...		175256	.. Insulator, Side Rh (Not Shown)	1
...		178551	.. Insulator, Side (Not Shown)	1
...	2	134327	.. Label, Warning General Precautionary Static & Wire Feed	2
...	3	138442	.. Label, Caution Falling Equip Can Cause Injury	2
...	4	208015	.. Handle, Rubberized Carrying	2
...	5	135483	.. Label, Important Remove These Two Handle Screws	2
...	6	R3/C4	233052 .. Resistor/Capacitor	1
...	7	SR1	201530 .. Kit, Diode Fast Recovery Bridge	1
...	8	199840	.. Bus Bar, Diode	2
...	9	196355	.. Insulator, Screw	4
...	10	D1,D2	201531 .. Kit, Diode Power Module	2
...	11	RT1	199798 .. Thermistor, NTC 30K Ohm @ 25 Deg C 18In Lead	1
...	12	CR1	255744 .. Relay, Encl 24VDC Spst 30A/300VAC 4Pin Flange Mtg	1
...	13	227127	.. Label, Warning Electric Shock/Exploding Parts	1
...	14	010546	.. Bushing, Snap-In Nyl .375 Id X .500 Mtg Hole	1
...	15	L4	218020 .. Inductor, Boost	1
...	16	179276	.. Bushing, Snap-In Nyl 1.000 Id X 1.375 Mtg Hole Cent	3
...	17	170647	.. Bushing, Snap-In Nyl 1.312 Id X 1.500 Mtg Hole	1
...	18	L3	251396 .. Inductor, Output	1
...	19	T1	251394 .. XFMR, HF Litz/Litz W/Boost	1
...	20	225097	.. Heat Sink, Lh Rect	1
...	21	L1	212091 .. Inductor, Input	1
...	22	083147	.. Grommet, Scr No 8/10 Panel Hole .312 Sq .500 High	4
...	23	PC1	242812 .. Circuit Card Assy, Control W/Program (Prior to MF254023U)	1
...	23	PC1	260291 .. Circuit Card Assy, Control W/Program (Eff w/MF254023U thru MG094219U)	1
...	23	PC1	273301 .. Circuit Card Assy, Control W/Program (Eff w/MG094220U)	1
...	23	PC1	◆242341 .. Circuit Card Assy, Control/Aux Power W/Program (Prior to MF254023U)	1
...	23	PC1	◆265280 .. Circuit Card Assy, Control/Aux Power W/Program (Eff w/MF254023U thru MG094219U)	1
...	23	PC1	◆274574 .. Circuit Card Assy, Control/Aux Power W/Program (Eff w/MG094220U)	1
...		216113	.. Stand-Off Support, PC Card .187 Dia W/P&I .375	2
...		PLG1	115091 .. Housing Plug+Pins (Service Kit) RC1	1
...		PLG2	201665 .. Housing Plug+Pins (Service Kit) RC2	1
...		PLG3	131056 .. Housing Plug+Pins (Service Kit) RC3	1
...		PLG5	131204 .. Housing Plug+Pins (Service Kit) RC5	1
...		PLG7	131054 .. Housing Plug+Pins (Service Kit) RC7	1
...		PLG8	131054 .. Housing Plug+Pins (Service Kit) RC8	1
...		PLG9	115093 .. Housing Plug+Pins (Service Kit) RC9	1
...		PLG10	115094 .. Housing Plug+Pins (Service Kit) RC10	1
...		PLG11	115094 .. Housing Plug+Pins (Service Kit) RC11	1
...		PLG12	115092 .. Housing Plug+Pins (Service Kit) RC12	1
...	24	263023	.. Bracket, Mtg Capacitor/Pc Board	1
...	25	C12,13	219930 .. Kit, Capacitor Elctlt Replacement (Includes)	1
...		193738	.. Capacitor, Elctlt 1800 Uf 500 VDC Can 2.52 Dia	2
...		217040	.. Nut, Nylon M12 Thread Capacitor Mounting	2
...		RC2	◆604176 .. Rcpt, Str Dx Grd 2P3W 15A 125V *5-15R	1
...	26	CB2	083432 .. Supplementary Protector, Man Reset 1P 10A 250VAC Frict	1
...	27	CB1	089807 .. Supplementary Protector, Man Reset 1P 2.5A 250VAC Frict	1
...	27	CB1	◆083432 .. Supplementary Protector, Man Reset 1P 10A 250VAC Frict	1
...	28	+212071	.. Panel, Rear Standard (Prior to ME224001U)	1
...	28	+265908	.. Panel, Rear Standard W/Knockout (Eff w/ME224001U)	1
...	28	◆+212202	.. Panel, Rear (Prior to ME244001U)	1
...	28	◆+265910	.. Panel, Rear Aux Power W/Knockout (Eff w/ME224001U)	1

+When ordering a component originally displaying a precautionary label, the label should also be ordered.

◆Part of 115V Aux Power Option. (Not Available On French Units)

**BE SURE TO PROVIDE MODEL AND SERIAL NUMBER WHEN ORDERING REPLACEMENT PARTS.**

# Eff w/Serial No. ME120121U And Following

Item No.	Dia. Mkgs.	Part No.	Description	Quantity
<b>Figure 15-1. Parts Assembly (Continued)</b>				
29		126026	Label, Warning Electric Shock Can Kill Significant	1
30			Nameplate, Rear (Order by Model and Serial Number)	1
30		◆	Nameplate, Rear Aux (Order by Model and Serial Number)	1
		◆217297	Cover, Receptacle Weatherproof Duplex Rcpt	1
31		217480	Label, Warning Incorrect Connections	1
32		215980	Bushing, Strain Relief .709/.984 Id X1.375 Mtg Hole	1
33		219487	Cable, Power	1
34		234126	Nut, Conduit 1.000 Npt Knurled	1
35	T2	211109	XFMR, Control 665V 336Va Syn Aux Pwr (Prior to MF254023U)	1
35	T2	268830	XFMR, Control 665V 336Va Syn Aux Pwr (Eff w/MF254023U)	1
35	T2	◆251003	XFMR, Control Toroidal 665 VAC Pri 1536 VA 60 Hz (Prior to MF254023U)	1
35	T2	◆270095	XFMR, Control Toroidal 665 VAC Pri 1536 VA 60 Hz (Eff w/MF254023U)	1
		◆212947	Plate, Mtg Toroid XFMR	1
36	L2	218018	Inductor, Pre-Regulator	1
37		218566	Gasket, Inductor Mounting	1
38	CT1	196231	XMFR, Current Sensing 200/1	1
39	C15	196143	Capacitor, Polyp Met Film 16. Uf 400 VAC 10%	1
40		216117	Bracket, Mtg Capacitor Series	1
41	RT2	199798	Thermistor, Ntc 30K Ohm @ 25 Deg C 18in Lead	1
42	PC2	263676	Circuit Card Assy, Interconnect W/Label & Clips (Includes)	1
43		126026	Label, Warning Electric Shock Can Kill Significant	1
		223343	Clip, Wire Stdf .40-.50 Bndl .156Hole .031-.078Thk	2
	PLG13	130203	Housing Plug+Pins (Service Kit) RC1	1
	PLG14	201665	Housing Plug+Pins (Service Kit) RC2	1
	PLG15	115092	Housing Plug+Pins (Service Kit) RC3	1
	PLG20	115093	Housing Plug+Pins (Service Kit) RC6	1
44		153403	Bushing, Snap-In Nyl .750 Id X 1.000 Mtg Hole Cent	2
45	RM1	205751	Module, Power Resistor W/Plug	1
46	MOD1, MOD2	261556	Kit, Input/Pre-Regulator And Inverter Module	1
47		212206	Windtunnel, Rh	1
48		196330	Heat Sink, Power Module	1
49		+175132	Base	1
50		229325	Foot, Mtg Unit	4
51		176736	Screw, Mtg Foot	4
52		153178	Label, Warning Exploding Parts Can Serious Injury	1
53		212074	Bus Bar, Output	1
54	HD1	182918	Transducer, Current 400A Module Supply V +/- 15V	1
55	PC3	243572	Circuit Card Assy, Front Panel & Display W/Program	1
	PLG18	131204	Housing Plug+Pins (Service Kit) RC2	1
	RC50	210233	Rcpt, W/Pins (Service Kit)	1
	PLG21	212088	Plug, W/Leads	1
	RC21	167640	Housing Plug+Pins (Service Kit)	1
56	S1	244920	Switch, Tgl 3pst 40a 600vac Scr Term Wide Tgl	1
57		176226	Insulator, Switch Power	1
58	FM1	196313	Fan, Muffin 115V 50/60Hz 3000 Rpm 6.378 Mtg Holes	1
	PLG16	131054	Housing Plug+Pins (Service Kit)	1
	RC16	135635	Housing Plug+Pins (Service Kit)	1

+When ordering a component originally displaying a precautionary label, the label should also be ordered.

◆Part of 115V Aux Power Option. (Not Available On French Units)

**BE SURE TO PROVIDE MODEL AND SERIAL NUMBER WHEN ORDERING REPLACEMENT PARTS.**



# Eff w/Serial No. ME120121U And Following

Item No.	Dia. Mkgs.	Part No.	Description	Quantity
<b>Figure 15-1. Parts Assembly (Continued)</b>				
59		258711	Rcpt Assy, Tw Lk Insul Fem (Dinse) Bolted (Includes)	1
		257994	Rcpt, Tw Lk Insul w/o-ring	1
		250037	Insulator, Bulkhead Front	1
		250039	Insulator, Bulkhead Rear	1
		185714	Washer, Tooth 22Mmid X 31.5Mmod 1.310-1Mmt Intern	1
		185717	Nut, M20-1.5 1.00Hex .19h Brs Locking	2
		185718	O-Ring, 0.989 Id X 0.070 H	1
		186228	O-Ring, 0.739 Id X 0.070 H	1
		178548	Terminal,Connector Friction	1
59	◆◆	258713	Rcpt Assy, Tw Lk Insul Fem (Tweco) Bolted (Includes)	1
		250040	Receptacle, Twist Lock Tweco .890 OD Bolted	1
		250037	Insulator, Bulkhead Front	1
		250039	Insulator, Bulkhead Rear	1
		185714	Washer, Tooth 22Mmid X 31.5Mmod 1.310-1Mmt Intern	1
		185717	Nut, M20-1.5 1.00Hex .19H Brs Locking	2
		185718	O-Ring, 0.989 Id X 0.070 H	1
		186228	O-Ring, 0.739 Id X 0.070 H	1
		178548	Terminal,Connector Friction	1
60		258710	Rcpt Assy, Tw Lk Insul Fem (Dinse) (Includes)	1
		257995	Rcpt, Tw Lk Insul w/o-ring	1
		250037	Insulator, Bulkhead Front	1
		250039	Insulator, Bulkhead Rear	1
		185714	Washer, Tooth 22Mmid X 31.5Mmod 1.310-1Mmt Intern	1
		185717	Nut, M20-1.5 1.00Hex .19H Brs Locking	2
		185718	O-Ring, 0.989 Id X 0.070 H	1
		186228	O-Ring, 0.739 Id X 0.070 H	1
		178548	Terminal,Connector Friction	1
60	◆◆	258712	Rcpt Assy, Tw Lk Insul Fem (Tweco) (Includes)	1
		250041	Receptacle, Twist Lock Tweco .890 OD	1
		250037	Insulator, Bulkhead Front	1
		250039	Insulator, Bulkhead Rear	1
		185714	Washer, Tooth 22Mmid X 31.5Mmod 1.310-1Mmt Intern	1
		185717	Nut, M20-1.5 1.00Hex .19H Brs Locking	2
		185718	O-Ring, 0.989 Id X 0.070 H	1
		186228	O-Ring, 0.739 Id X 0.070 H	1
		178548	Terminal,Connector Friction	1
61		212070	Panel, Front Standard	1
62	C6,7	214749	Capacitor Assy, W/Plug & Leads (Voltage Feedback)	1
63		216112	Fastener, Panel Receptacle Quick Access	2
64			Nameplate (Order by Model and Serial Number)	1
65			Nameplate, Connection (Order by Model and Serial Number)	1
66			Nameplate, Power (Order by Model and Serial Number)	1
67		174991	Knob, Pointer 1.250 Dia X .250 Id W/Spring Clip-.21	2
68		174992	Knob, Pointer .840 Dia X .250 Id W/Spring Clip-.21	1
69		239916	Label, Process	1
70		218041	Door, W/Quick Access Ball Fasteners	1
71		175138	Box, Louver	1
72			Label, (Order by Model and Serial Number)	1
73		+212207	Windtunnel, Lh	1
74		211503	Insulator, Heat Sink	1
75		227746	Gasket, Inductor Mounting	1
76	L8	241027	Core, Toroidal	1
77		251701	Adapter, Nut Capacitor	2
78		263052	Insulator, Capacitor Mtg	1

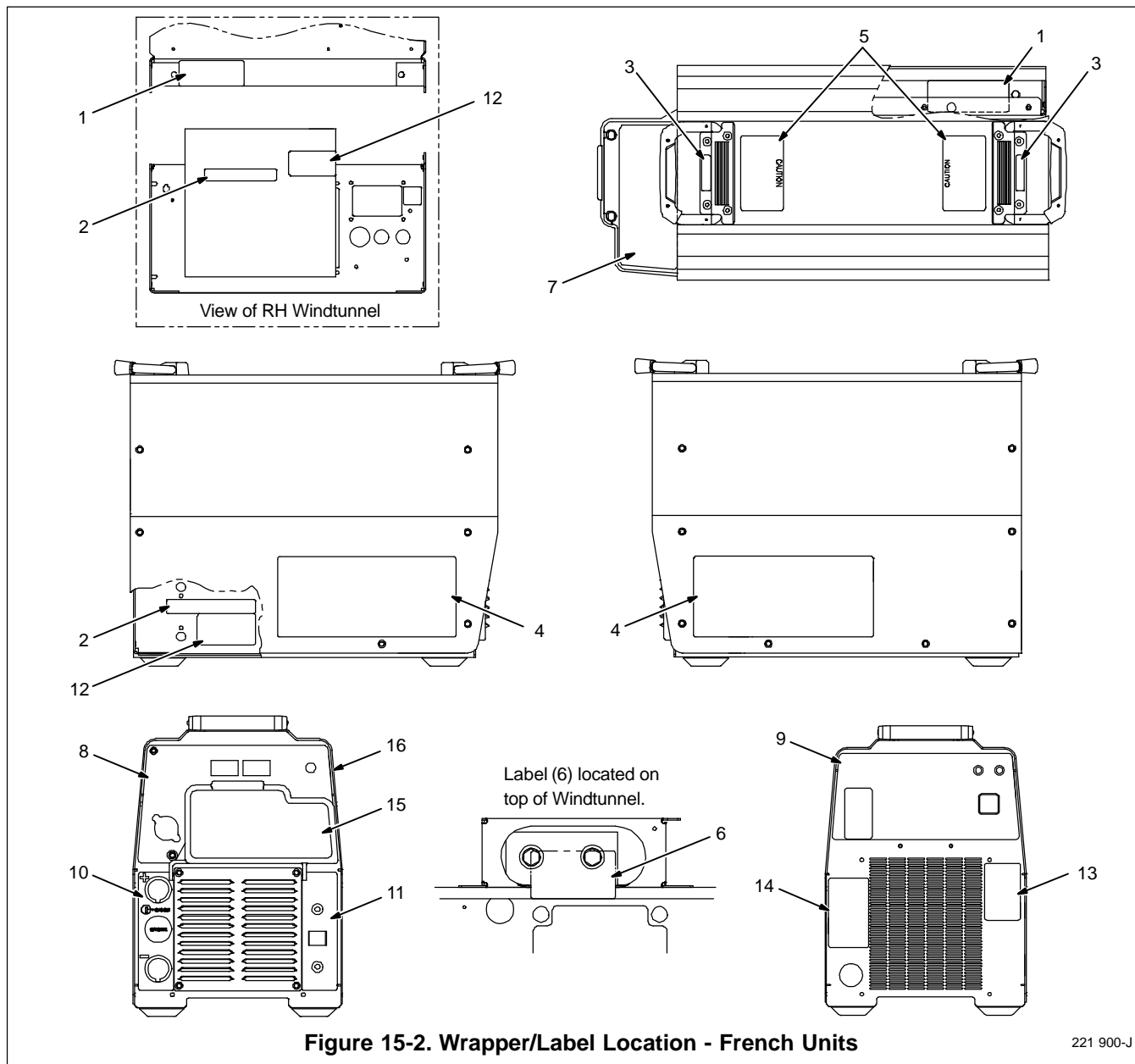
+When ordering a component originally displaying a precautionary label, the label should also be ordered.

◆Part of 115V Aux Power Option. (Not Available On French Units)

◆◆Part of Tweco Type Connector Option. (Not Available On French Units)

**BE SURE TO PROVIDE MODEL AND SERIAL NUMBER WHEN ORDERING REPLACEMENT PARTS.**

# Eff w/Serial No. ME120121U And Following



**Figure 15-2. Wrapper/Label Location - French Units**

221 900-J

Item No.	Part No.	Description	Quantity
<b>Figure 15-2. Wrapper/Label Location - French Units</b>			
1	218545	Label, Warning Exploding Parts Can Serious Inj (French)	2
2	126026	Label, Warning Electric Shock Can Kill Significant	2
3	218542	Label, Important Remove These Two Handle Screws (French)	2
4	217136	Label, Warning Electric Shock (English/French)	2
5	218541	Label, Caution Falling Equip Can Cause Injury (French)	2
6	218544	Label, Warning Electric Shock Can Kill (French)	1
7	244870	Label, Process (French)	1
8		Nameplate, (French) (Order by Model and Serial Number)	1
9		Nameplate, Rear (French) (Order by Model and Serial Number)	1
10		Nameplate, Connection/CE (Order by Model and Serial Number)	1
11		Nameplate, Power/CE (Order by Model and Serial Number)	1
12	220022	Label, Warning Electric Shock Can Kill (French)	2
13	220023	Label, Warning Incorrect Connections (French)	1
14	217480	Label, Warning Incorrect Connections	1
15		Label, (Order by Model and Serial Number)	1
16	221787	Wrapper (Includes Insulators and Safety Labels) (French)	1



**Miller Electric Mfg. Co.**

An Illinois Tool Works Company  
1635 West Spencer Street  
Appleton, WI 54914 USA

**International Headquarters-USA**

USA Phone: 920-735-4505 Auto-Attended  
USA & Canada FAX: 920-735-4134  
International FAX: 920-735-4125

For International Locations Visit  
[www.MillerWelds.com](http://www.MillerWelds.com)

