



PM-225216A

2020-07

Processes



Air Plasma Cutting
and Gouging

Description



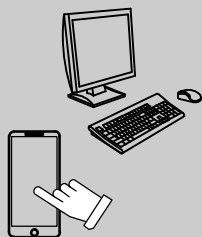
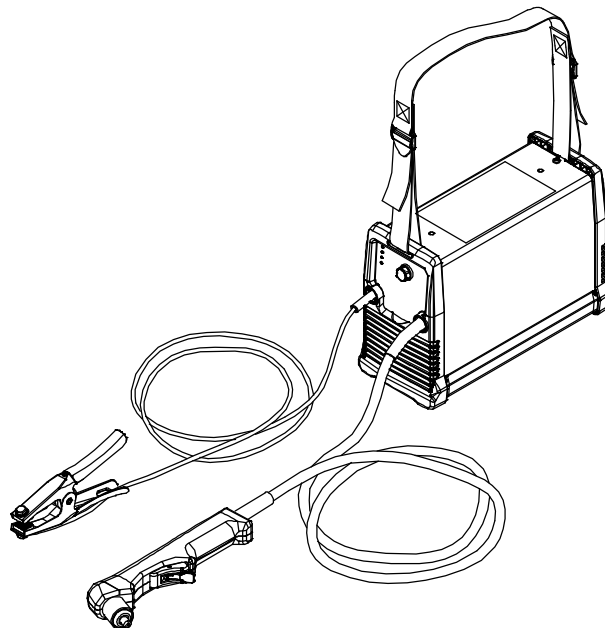
Air Plasma Cutter

Spectrum[®] 375 X-TREME And ICE-27T Torch

PARTS LIST

Eff w/LG130001P Thru MB290225P

For OM-225216 Revisions A Thru F




For product information,
Owner's Manual translations,
and more, visit

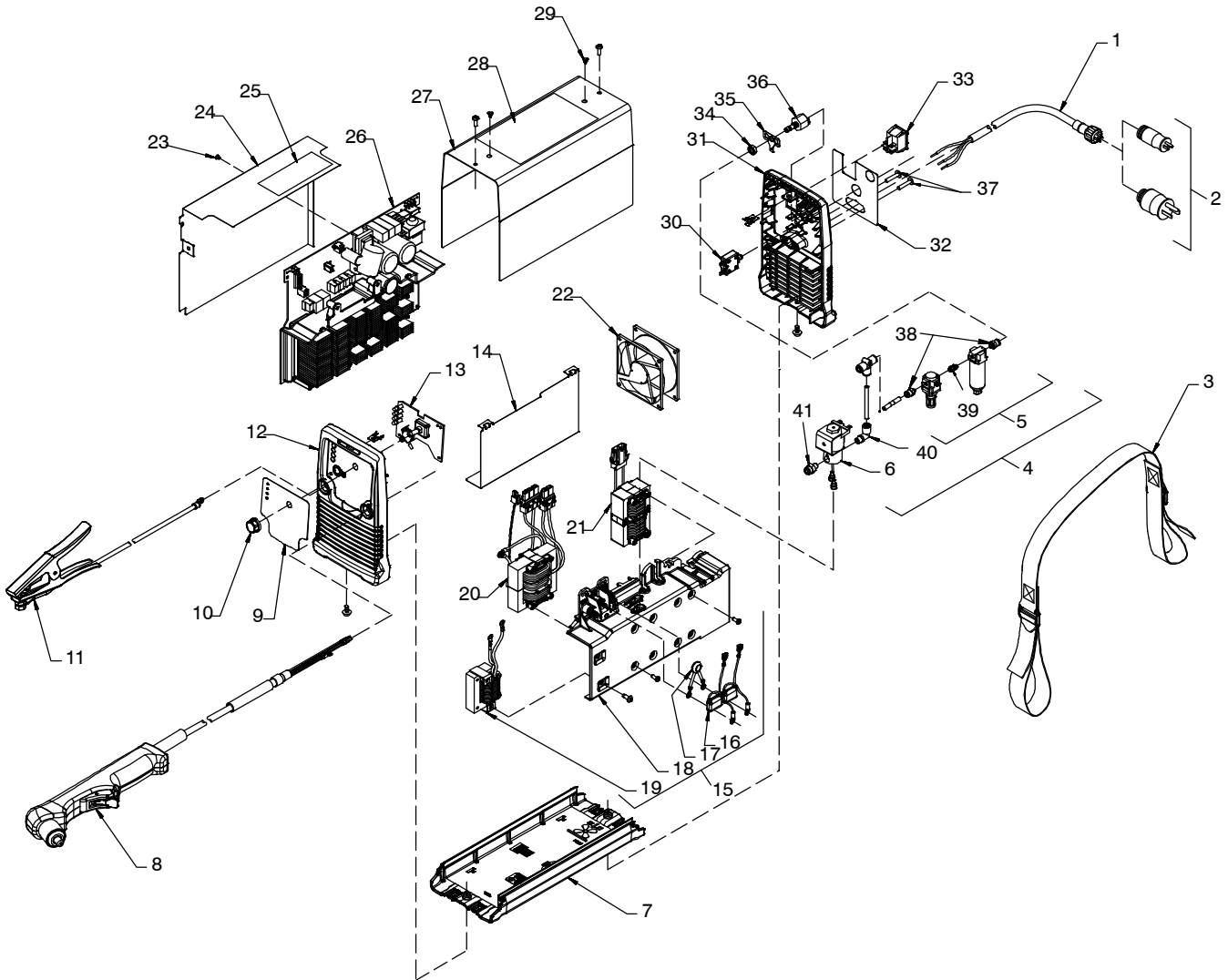
www.MillerWelds.com

File: Plasma Cutters



SECTION 1 – PARTS LIST

 Hardware is common and not available unless listed.



804 507-C

Figure 1-1. Main Assembly

Item No.	Dia. Mkgs.	Part No.	Description	Quantity
Figure 1-1. Main Assembly				
...	1	+225180	CABLE,POWER 10 FT 2 IN 14GA 3C W/MVP	1
		224587	LABEL,WARNING USE CORRECT INPUT VOLTAGE	1
...	2	225970	PLUG KIT,ADAPTER (115V/15A) (230V/50A) (including)	1
		219261	ADAPTER,POWER CABLE 5-15P (115V/15A)	1
		219258	ADAPTER,POWER CABLE 6-50P (230V/50A)	1
...	3	208548	STRAP,SHOULDER DOUBLE BUCKLE	1
...	4	229709	FILTER/REGULATOR/VALVE ASSEMBLY (including)	1
...	5	229750	FILTER/REGULATOR ASSY (including)	1
		225803	ELEMENT,FILTER AIR	1
		232777	FTG,PLSTC/BRS STRAIGHT QDISC m5 X .250 TBG	2
		232781	FTG,STL STRAIGHT UNION M5	1
...	6	AS 1	229749 VALVE,SOLENOID W/FITTINGS	1
...	7	208545	BASE,	1
...	8	225615	ICE- 27T,12FT HAND HELD (REPLACEMENT)	1
...	9	225175	NAMEPLATE,FRONT	1
...	10	174992	KNOB,POINTER .840 DIA X .250 ID W/SPRING CLIP- 21	1
...	11	225916	CABLE,WORK 12 FT 8 GA W/CLAMP STRAIN RLF & TERM (INCLUDING)	1
		213619	CLAMP,WORK 300 AMP STL CLEAR ZINC PLD W/COP CONTACT	1
		227515	CABLE,WORK 12 FT 12 GA	1
		190900	TERM,RING TNG #10STUD SOLISTRAND 12-10GA REEL	1
		227518	TERM,RING TNG 312STUD SOLISTRAND 12-10GA	1
...	12	225169	PANEL,FRONT	1
...	13	PC2	224985 CIRCUIT CARD ASSY,LED/POT	1
...	14	208556	INSULATOR,HEAT SINK	1
...	15	225960	MAGNETICS/WINDTUNNEL ASSY (including)	1
...	16	222488	CAPACITOR ASSY	2
...	17	229878	VARIATOR, 360V 122 JOULE W/TERMINALS	1
...	18	225171	WINDTUNNEL,MAGNETICS	1
...	19	225174	INDUCTOR,OUTPUT	1
...	20	225172	XFMR,HF LITZ	1
...	21	225173	INDUCTOR,INPUT	1
...	22	FM 1	227682 FAN,MUFFIN 12VDC 4800 RPM 110 CFM W/LEADS	1
...	23	146549	RIVET,PLASTIC .122 HOLE X .039-.079 GRIP PUSH	2
...	24	+226780	INSULATOR,WRAPPER	1
...	25	208622	LABEL,WARN ELECT SHOCK/EXPLOD PARTS/DO NOT REMOVE	1
...	26	PC1	245138 KIT,REPLACEMENT CIRCUIT CARD ASSY (INCLUDING)	1
			CIRCUIT CARD ASSY	1
		226780	INSULATOR,WRAPPER	1
		146549	RIVET,PLASTIC .122 HOLE X .039-.079 GRIP PUSH	1
		208622	LABEL,WARN ELECT SHOCK/EXPLOD PARTS	1
		208556	INSULATOR,HEAT SINK	1
...	27	+227891	WRAPPER,	1
...	28	196851	LABEL,WARNING PRECAUTIONARY PLASMA CUTTING EQUIP.	1
...	29	228389	FASTENER,PUSH-IN .125-.156 MTG HOLE NYLON BLACK	2
...	30	CB 1	225844 SUPPLEMENTARY PROTECTOR,MAN RESET 1P 30A 250VAC	1
...	31	225170	PANEL,REAR	1
...	32	225921	NAMEPLATE,REAR	1
...	33	S 1	208550 SWITCH,ROCKER DPST 16A 250VAC ON-OFF BLK PANEL MTG	1

+When ordering a component originally displaying a precautionary label, the label should also be ordered.

To maintain the factory original performance of your equipment, use only Manufacturer's Suggested Replacement Parts. Model and serial number required when ordering parts from your local distributor.

Item No.	Dia. Mkgs.	Part No.	Description	Quantity
----------	------------	----------	-------------	----------

Figure 1-1. Main Assembly (Continued)

... 34	...	225807	.. NUT, 312-24 .50HEX .18H BRS	1
... 35	...	228224	.. CLIP,GRD 250X032 FRICT TERM MALE W/SNAP RETAINER	1
... 36	...	225806	.. FTG,BRS NIPPLE QDISC 1/4 OD X 1/4 NPT FEMALE	1
... 37	...	208536	.. SCREW,K50X 25 RND WSHR HD-TRX STL PLD DELTA PT	2
... 38	...	232777	.. FTG,PLSTC/BRS STRAIGHT QDISC M5 X .250 TBG	2
... 39	...	232781	.. FTG,STL STRAIGHT UNION M5	1
... 40	...	204004	.. FTG,PLSTC/BRS ELBOW QDISC 1/8 NPT X .250 TBG SWIVL	1
... 41	...	204003	.. FTG,PLSTC/BRS STRAIGHT QDISC 1/8 NPT X .250 TBG	1
.....	202481	.. CONSUMABLE KIT,ICE- 27C/T	1
.....	227745	.. LABEL,ICE-27T/C CONSUMABLES/MVP	1

+When ordering a component originally displaying a precautionary label, the label should also be ordered.

To maintain the factory original performance of your equipment, use only Manufacturer's Suggested Replacement Parts. Model and serial number required when ordering parts from your local distributor.

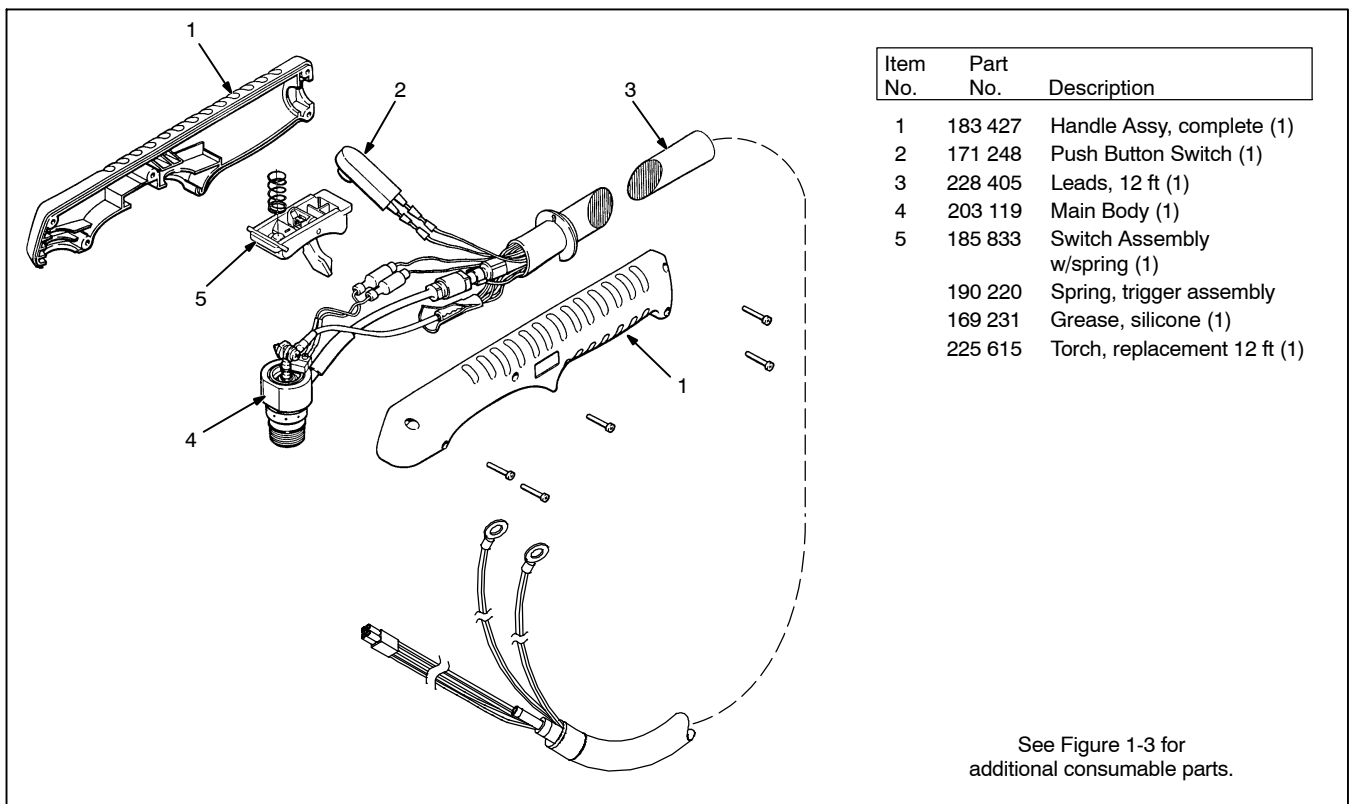
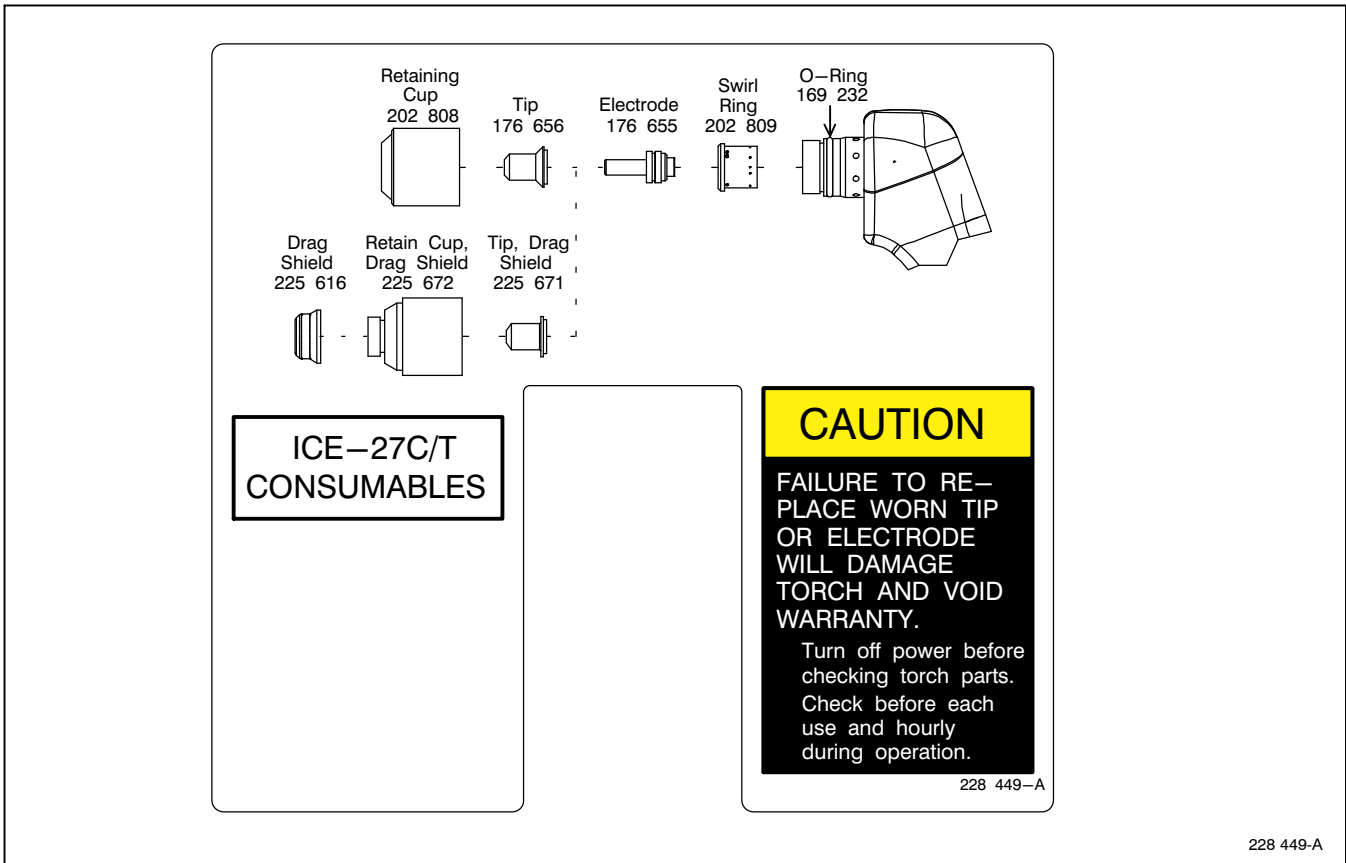


Figure 1-2. Torch, ICE-27T



228 449-A

Figure 1-3. Consumable Parts For ICE-27C/T

To maintain the factory original performance of your equipment, use only Manufacturer's Suggested Replacement Parts. Model and serial number required when ordering parts from your local distributor.



PM-225216A

2020-07

Processes



Air Plasma Cutting
and Gouging

Description



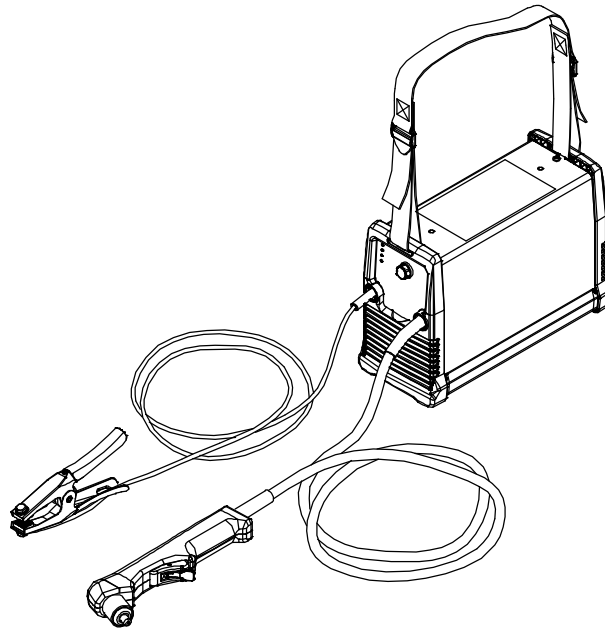
Air Plasma Cutter

Spectrum[®] 375 X-TREME And ICE-27T Torch

PARTS LIST

Eff w/MB290226P And Following

For OM-225 216 Revision H And Following

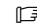


Visit our website at
www.MillerWelds.com

File: Plasma Cutters



SECTION 2 – PARTS LIST

 Hardware is common and not available unless listed.

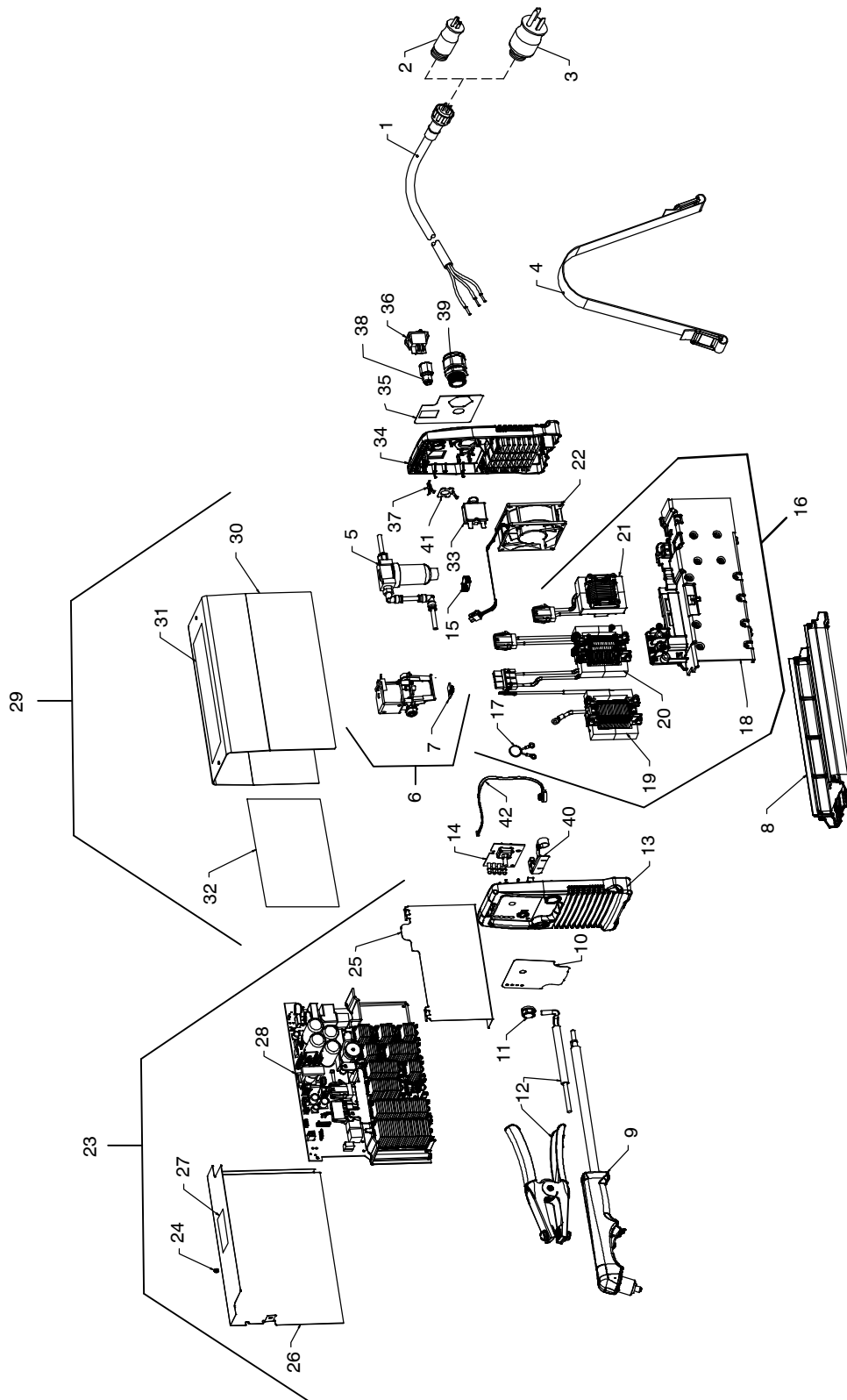
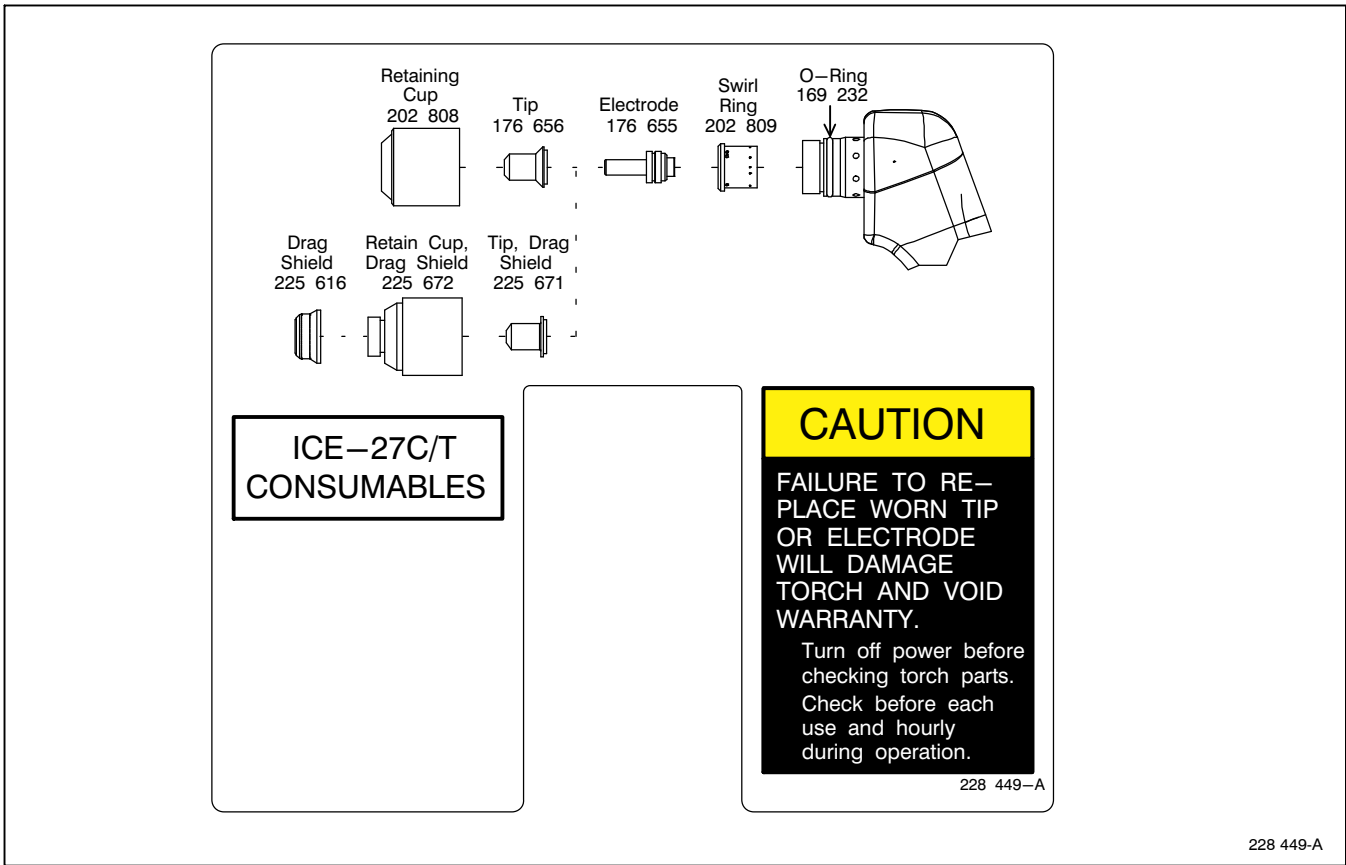


Figure 2-1. Main Assembly

Item No.	Dia. Mkgs.	Part No.	Description	Quantity
Figure 2-1. Main Assembly				
42		225180	Cable, Power Cord W/Mvp	1
43		219261	Adapter, Power Cable 5-15P (115V/15A)	1
44		219258	Adapter, Power Cable 6-50P (230V/50A)	1
45		208548	Strap, Shoulder Double Buckle	1
46		237131	Filter, Air W/Fittings & Tubing	1
		238486	Filter, Air Element 5 Micron	1
47		241300	Kit, Valve Assy Replacement W/Pressure Switch	1
48		241301	Kit, Replacement Circuit Card Assy Pressure Switch	1
49		+208545	Base	1
50		225615	ICE- 27T, 12 ft Hand Held Torch (Replacement)	1
51		225175	Nameplate, Front	1
52		174992	Knob, Pointer .840 Dia X .250 ID w/Spring Clip-.21	1
53		225916	Cable, Work 12 ft 12 ga w/Clamp	1
			Strain Rlf & Term (Includes)	1
		213619	Clamp, Work 300 Amp Stl Chrome Pld	1
			W/Cop Contacts (Includes)	1
		213620	Contact Tip, Work Clamp 300 Amp Copper	2
54		251196	Panel, Front	1
55	PC2	249976	Circuit Card Assy, LED/POT	1
56		238517	Clip, Filter Holder	2
57		250823	Magnetics/Windtunnel Assy (includes)	1
58	VR2	229878	Varistor, 360v 122 Joule W/Terminals	1
59		236937	Magnetics/Windtunnel	1
60	L2	250744	Inductor, Output	1
61	T1	250705	Xfmr, Hf Litz 10:13	1
62	L1	237753	Inductor, Input	1
63	FM1	250462	Fan, Muffin 24VDC 6500 RPM	1
64	PC1	250809	Kit, Replacement Circuit Card Assy Wndtnl Htsnk W/C	1
65		146549	Rivet, Plastic .122 Hole X .039-.079 Grip Push	2
66		208556	Insulator, Heat Sink	1
67		+238520	Insulator, Wrapper	1
68		208622	Label, Warn Elect Shock/Explod Parts/Do Not Remove	1
69			Circuit Card Assy, Wndtnl	1
70		232534	Wrapper w/Labels (Including)	1
71		+208532	Wrapper	1
72		230530	Label, Caution/Warning English/Spanish	1
73		251938	Ckt, Label	1
		239404	Label, Miller	1
		240123	Label, Side	1
74	CB 1	225844	Supplementary Protector, Man Reset 1p 30a 250vac	1
75		251274	Panel, Rear	1
76		251179	Nameplate, Rear	1
77	S 1	177396	Switch, Rocker Dpst 16a 250vac On-Off Blk Panel Mtg	1
		202481	Consumable Kit, ICE- 27C/T	1
78		208558	Term, Frict 250x032	2
79		238141	Ftg, Air Bulkhead Panel Mtg Qdisc 1/4nptf X .250tbg	1
80		201155	Bushing, Strain Relief .450/.709 Id X1.068 Mtg Hole	1
81		225805	Bracket, Strain Relief	1
82		237130	Clip, Grd 250x032 Frict Term Male w/.575 Mtg Hole	1
83	PS1	236003	Sensor, Pressure 0-100mV DC/0-100psi	1

+When ordering a component originally displaying a precautionary label, the label should also be ordered.

To maintain the factory original performance of your equipment, use only Manufacturer's Suggested Replacement Parts. Model and serial number required when ordering parts from your local distributor.



228 449-A

Figure 2-2. Consumable Parts For ICE-27C/T

To maintain the factory original performance of your equipment, use only Manufacturer's Suggested Replacement Parts. Model and serial number required when ordering parts from your local distributor.

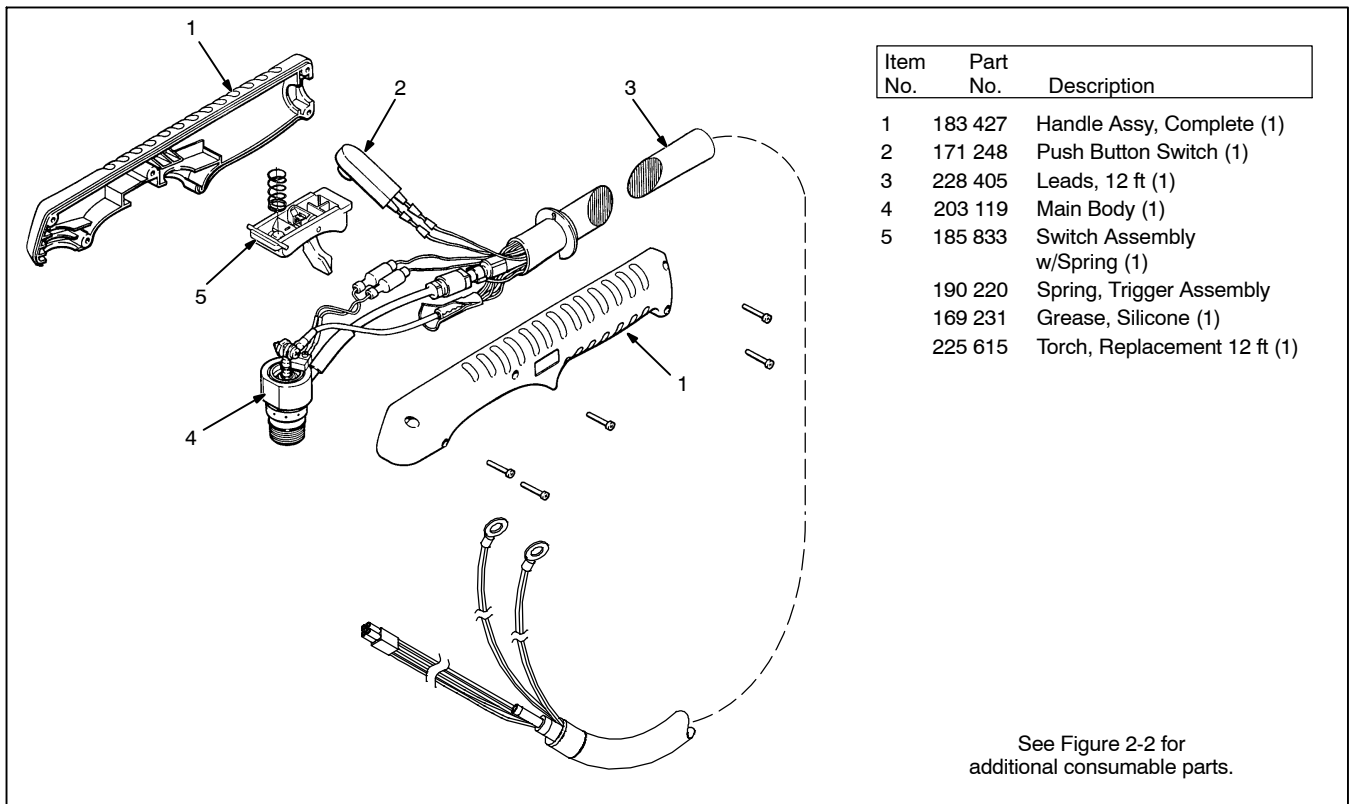


Figure 2-3. Torch, ICE-27T

To maintain the factory original performance of your equipment, use only Manufacturer's Suggested Replacement Parts. Model and serial number required when ordering parts from your local distributor.