



◀ ALISYN PALLA

Alisyn Palla is an artist and owner of Meraki Metal Works. She has also been a licensed attorney for the past 20 years. In early 2023, Alisyn decided it was finally time to “jump in” and see what she could do creatively. Since she took that leap of faith, Alisyn has been hired to create for restaurants, public art installations, custom gates, and commissioned art pieces as well as showing her work in galleries and art exhibits. Metal is Alisyn’s favorite medium, but experimenting with other challenging construction materials and obscure mediums has pushed her creative boundaries in ways she never imagined.

SKILL LEVEL: Beginner
TIME COMMITMENT: 1-2 hours

/ TOOLS AND MATERIALS



Miller® Multimatic® 220 AC/DC multiprocess welder



Miller® Spectrum® 625 X-TREME™ plasma cutter – or may use shears, cut-off wheel, oxy-fuel cutting torch, or other means to cut sheet metal



Grinder/air grinder – for blending



Square/ruler



Pen



Scissors



Cardstock/paper – for template



Clear safety lenses



16- to 22-gauge sheet metal



Safety glasses – shade 3 or 5



Miller MIG gloves



Miller® Digital Performance™ welding helmet

Tools used in building but not required:



Oxy-fuel Smith® torch – for heat coloring

DIY WELDING PROJECT: HOLIDAY TREE LANTERN



In this step-by-step homemade welding project for beginners, Alisyn Palla, artist and owner of Meraki Metal Works, guides you through the process of creating a holiday tree lantern using the Miller Multimatic 220 AC/DC multiprocess welder and Spectrum 625 X-TREME plasma cutter.

STEP BY STEP

STEP 1



Create an isosceles triangle template using cardstock, a square/ruler, pen and scissors. Adjust the height and width based on the desired lantern size.

STEP 2



Use the template to trace three identical triangles on the sheet metal.

STEP 3



Cut the three identical triangles from the sheet metal using a plasma cutter, shears, cut-off wheel, oxy-fuel cutting torch or any other suitable tool.

STEP 4



Draw designs on each triangle for the lantern light to shine through. Simple spirals are shown, but any design will work. Just be mindful of the material size being removed.

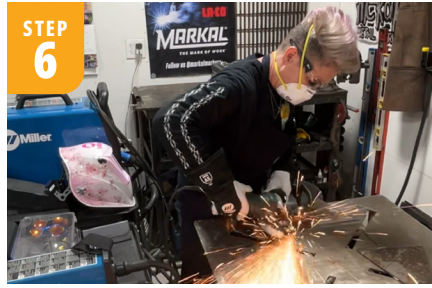
WARNING: READ AND FOLLOW ALL LABELS AND THE OWNER'S MANUAL.

continued on next page

continued from previous page



STEP 5
Cut the designs into triangles using a plasma cutter or another tool to remove the material.



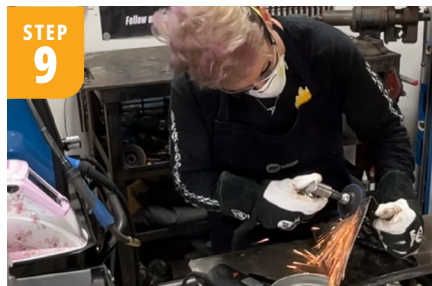
STEP 6
Clean and prep the metal for welding using a grinder, air grinder, or hammer and chisel.



STEP 7
Tack the three triangles together, aligning the top tips and edges to form a tree shape.



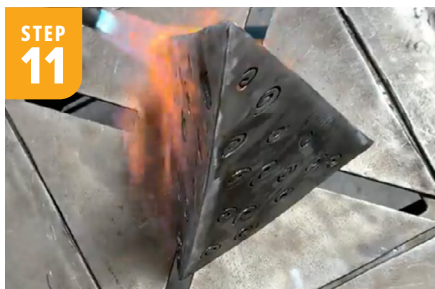
STEP 8
Weld the seams of the tacked triangles.



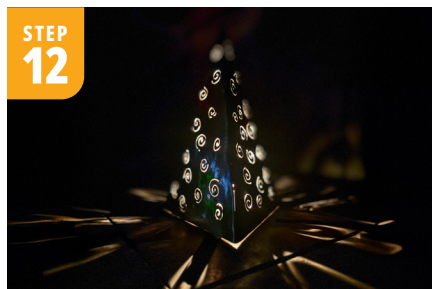
STEP 9
Clean and smooth the seams of the triangles to the desired finish.



STEP 10
Optional: Sign your art using a Multimatic 220 AC/DC on the lowest setting to write your initials on the sheet metal.



STEP 11
Optional: Use an Oxy-fuel Smith torch to heat and color the finished lantern. Let it cool before handling.



STEP 12
Light a candle, place the lantern over it and watch the magical glow fill the room!



To get the latest welding project in your inbox,
sign up for the Miller DIY newsletter.

millerwelds.com/resources/newsletters

