



# A NEW LEGEND



## NEW BOBCAT™ 265 AIR PAK™

It has all the dependability that made the Bobcat machine a legend, plus all-in-one tool with multiprocess weld quality, auxillary power, air compressor and battery charge/crank assist.



**MORE CAPABILITIES**

It can take on more jobs while delivering the uncompromised performance you need.



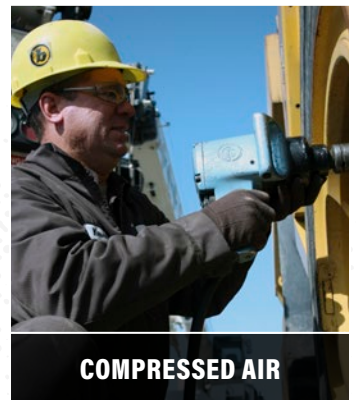
**DIGITAL INTERFACE**

Speeds setup and makes it less complicated.



**BATTERY CHARGE/  
CRANK ASSIST (STANDARD)**

Ensures that you have reliable DC output when you need it, without carrying a separate charger.



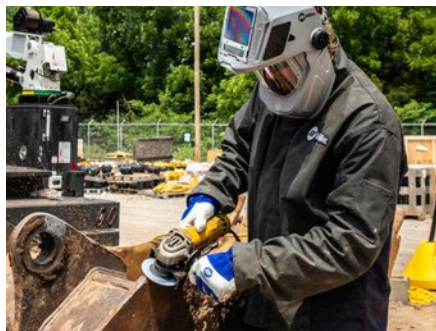
**COMPRESSED AIR**

Produces 30 cfm of air at 100 percent duty cycle and delivers 80-160 psi of air with no storage tank.



### AUTO-SET™ TECHNOLOGY

Makes weld parameter setup fast, easy and accurate for operators of all skill levels.



### FULL AUXILIARY POWER

Ensures that you'll always have the auxiliary power you need for jobsite tools at any weld setting.



### SMOOTH, STABLE ARCS

Delivers uncompromised stick arc performance with 7018 and 6010 electrodes.



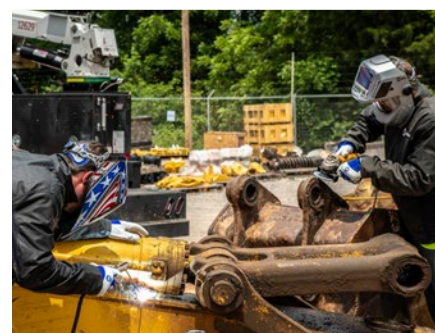
### LIGHTER AND SMALLER

Over 184 pounds lighter and 13% smaller than previous models, it's easier to move and takes up less space on trucks.



### MORE DATA VISIBILITY

- Predictive maintenance information helps you plan necessary service time.
- Productivity screens make it easier for you to monitor machine use.



### NO POWER SPIKES

Jobsite tools can run without interruption, helping you get more done.



### DIRECT SPOOL GUN CONNECTION

Makes it easy to weld aluminum, expanding the types of jobs you can take on.



**MAKE YOUR WORK LEGENDARY  
WITH THE NEW BOBCAT™ 265 AIR PAK™:  
VISIT [MILLERWELDS.COM/LEGENDS](https://millerwelds.com/legends)**

