

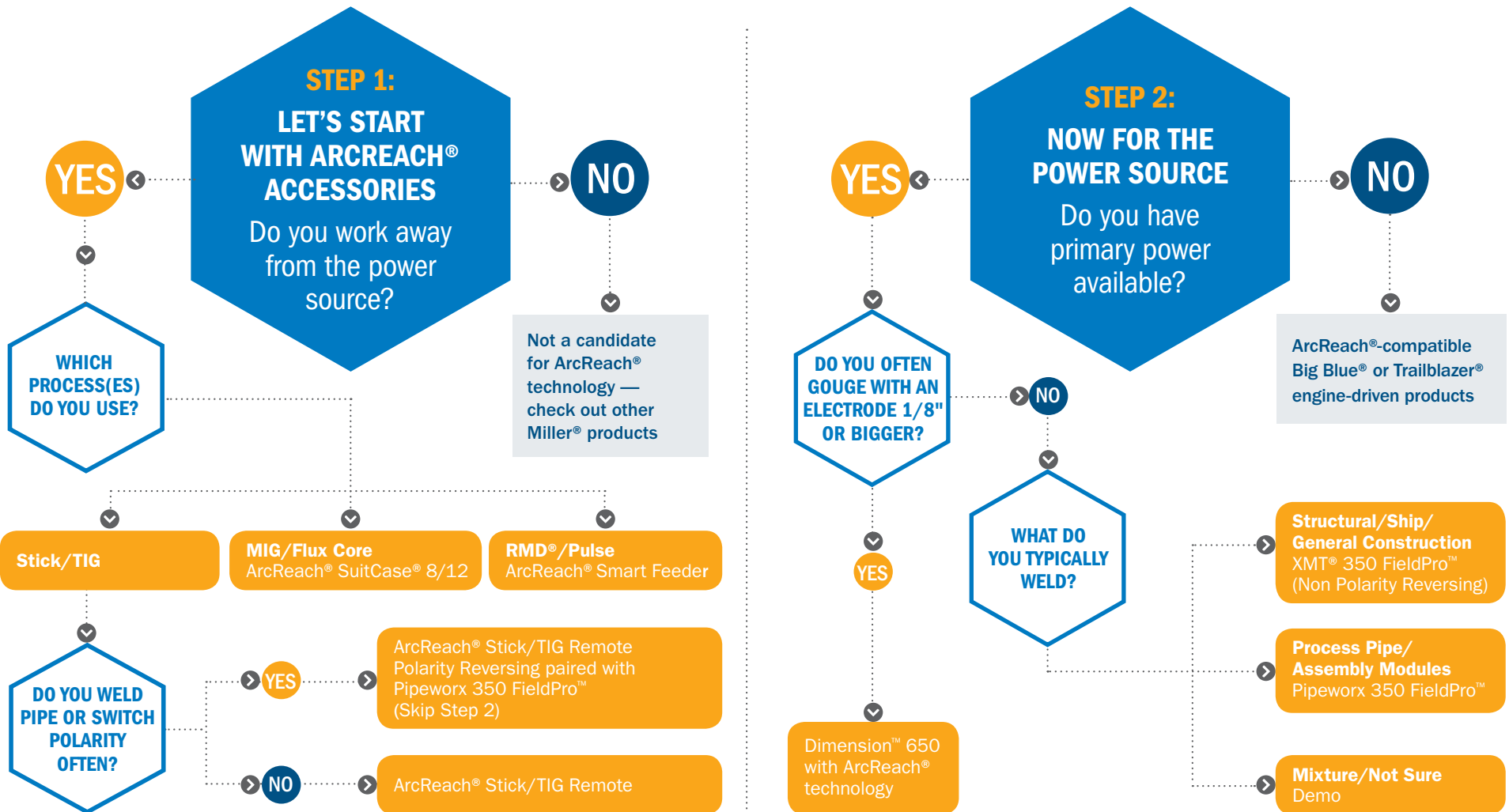
NEW: XMT® 350 FIELDPRO™ WELDING SYSTEMS

with Industry-Exclusive ArcReach® Technology



SELECTING THE RIGHT SYSTEM

TO ENSURE YOU SELECT THE RIGHT SYSTEM: **1.** First, select the accessories you need. **2.** These accessories will then help you select the appropriate power source.



The Pipeworx 350 FieldPro Polarity Reversing model will be replaced with the XMT 350 FieldPro Polarity Reversing model in 2018.