



ArcStation™

The only workbench designed for welders

MillerWelds.com/ArcStation





This isn't your ordinary workbench.

Count on Miller to create a workbench that makes welding faster and easier. ArcStation™ is the first-ever workbench designed for welding and metalworking. Miller ArcStation offers:

- **Durability** — All-steel construction and thoughtful performance features make our ArcStations built to last.
- **Versatility** — ArcStation is available with a variety of accessories that you can mix and match to suit your individual needs.
- **Affordability** — With numerous sizes, styles, and configurations to choose from, you can find an ArcStation that fits your projects and budget.



Built for the way you work.

Forget about welding on the floor or makeshift benches. Engineered specifically for the welding process, ArcStation is just the right height for you to work comfortably, safely, and quickly. You can customize your workbench with a wide range of handy accessories, and organize everything you need in one convenient workbench.

Product comparison at a glance

	S-Series	F-Series
Applications	Heavy-duty, sturdy workbench designed to remain set up in a shop or garage	Portable folding workbench ideal for bringing to the job site and saving space
Sizes	30 x 30 in or 30 x 60 in	30 x 30 in
Tabletop styles	3/16-in solid or 3/8-in X-pattern	3/16-in X-pattern
Accessories	Tool chest, vise kit, vise mount, 5-in X-clamp, 6-in X-clamp, convenience kit, interior shelf, weld curtain, casters	5-in X-clamp
Portability	No	Yes — 74 lb, wheels standard
Load capacity	1000 lb (454 kg)	500 lb (227 kg)



60SX with optional accessories

S-Series ArcStation™

For the welder who's tough on equipment

The S-Series ArcStation is perfect for the fab shop or home garage. Its durable frame and heavy-duty tabletop provides a sturdy foundation for welding or metalworking.

Models available:

- 30S (30 x 30 in S-Series with 3/16-in solid tabletop)
- 30SX (30 x 30 in S-Series with 3/8-in X-pattern tabletop)
- 60S (30 x 60 in S-Series with 3/16-in solid tabletop)
- 60SX (30 x 60 in S-Series with 3/8-in X-pattern and solid tabletop combo)

Standard features:

- X-pattern tabletop on SX models makes clamping trouble-free.
- Frame construction consists of 1 1/2-in square tubing.
- Sturdy 1/8-in-thick steel frame with crossbar adds stability.
- Lower shelf provides storage for equipment, tools, and raw materials.
- Adjustable leveling feet keep the bench rock steady.
- Weight capacity is 1000 lb (454 kg).

Make it the perfect workbench for you by including some handy accessories

- 1 Tool chest
- 2 Vise kit
(includes vise, vise mount and all mounting hardware)
- 3 Vise mount (only)
- 4 5-in X-clamp
- 5 6-in X-clamp
- 6 Interior shelf
- 7 Weld curtain
- 8 Casters
- 9 Outer shelf

Convenience Kit includes the following:

- 10 Tool holder
- 11 Clamp bar
- 12 Gun holder



30FX with optional 5-inch X-clamps

F-Series ArcStation™

For the welder who requires portability and space savings.

The F-Series ArcStation's unique folding design and convenient handle and wheels make it easy to take to the job site or move around the shop or garage. And since it folds down into a compact size, the F-Series is easy to store.

Model available:

- 30FX (30 x 30 in F-Series with 3/16-in X-pattern tabletop)

Standard features:

- X-pattern tabletop on FX models makes clamping trouble-free.
- 1 1/2-in diameter steel tube frame offers stability and support.
- Wheels and a handle make the 74-lb bench easy to transport.
- Removable gun holder provides a convenient place to store your welding gun.
- Weight capacity is 500 lb (227 kg).

Add the optional 5-inch X-clamps for the ultimate portable workbench (as shown above).



Build your ArcStation™

S-Series



30S (951 167)

Tabletop style 3/16-in solid tabletop
Weight 123 lb (56 kg)
Dimensions 30 x 30 in (35 x 29 x 29 in)



30SX (951 168)

Tabletop style 3/8-in X-pattern tabletop
Weight 177 lb (80 kg)
Dimensions 30 x 30 in (35 x 29 x 29 in)



60S (951 169)

Tabletop style 3/16-in solid tabletop
Weight 230 lb (104 kg)
Dimensions 30 x 60 in (35 x 58 x 29 in)



60SX (951 170)

Tabletop style 3/8-in combo tabletop
Weight 318 lb (144 kg)
Dimensions 30 x 60 in (35 x 58 x 29 in)

S-SERIES ACCESSORIES:

	Stock #	Description
<input type="checkbox"/>	300 610	Tool chest
<input type="checkbox"/>	300 611	Vise kit
<input type="checkbox"/>	300 612	Vise mount
<input type="checkbox"/>	300 613	6-in X-clamp
<input type="checkbox"/>	300 614	Convenience Kit
<input type="checkbox"/>	300 679	Interior shelf
<input type="checkbox"/>	300 680	Outer shelf
<input type="checkbox"/>	300 685	30-in weld curtain
<input type="checkbox"/>	300 686	60-in weld curtain
<input type="checkbox"/>	300 849	Casters
<input type="checkbox"/>	300 850	5-in X-clamp

F-Series



30FX (300 837)

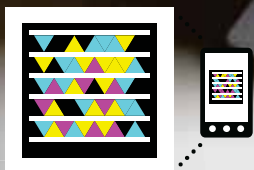
Tabletop style 3/16-in X-pattern tabletop
Weight 74 lb (34 kg)
Dimensions 30 x 30 in (35 x 29 x 35 in unfolded, 6 x 29 x 48 in folded)

F-SERIES ACCESSORY:

	Stock #	Description
<input type="checkbox"/>	300 850	5-in X-clamp

ArcStation™

The only workbench designed for welders



Scan this tag to see the ArcStation video

MillerWelds.com/ArcStation

Follow us:   

