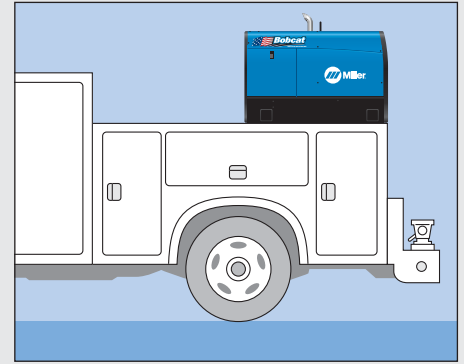
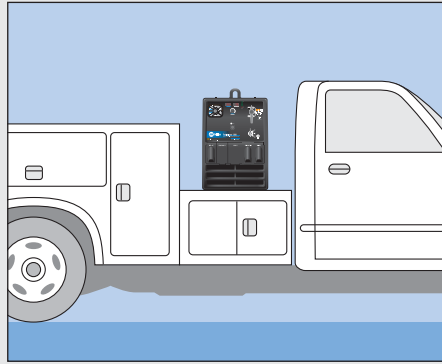
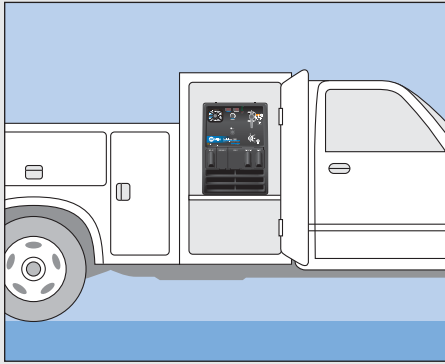


Designed for Truck Installations



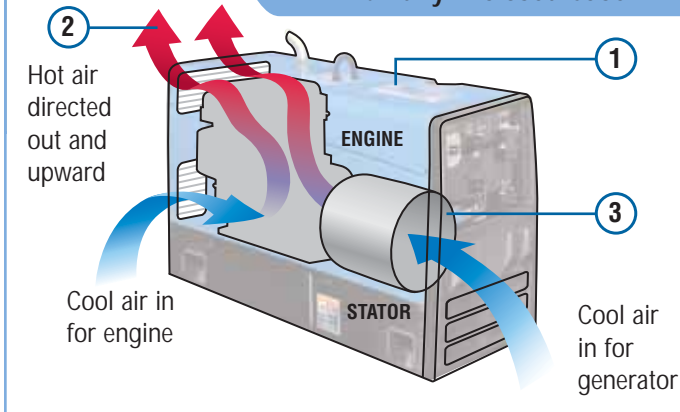
Designed for Reliability

Runs cooler for longest life!

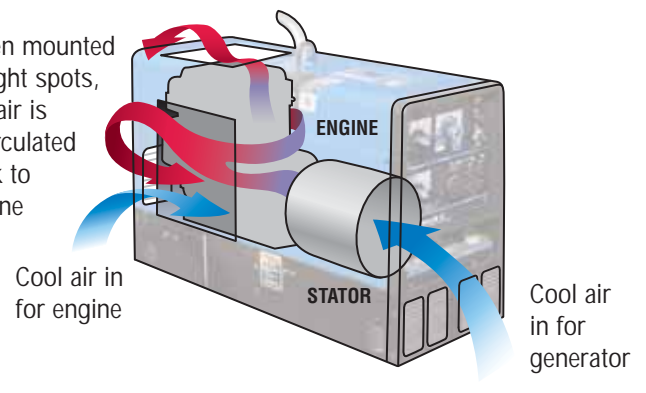
NEW! Fully Enclosed Case

VS.

Open Engine Design



When mounted in tight spots, hot air is recirculated back to engine



- 1 The fully enclosed case design virtually eliminates hot air recirculation when the machine is mounted in tight spots.
- 2 Louver-directed air flow keeps the temperature of internal parts cool for maximum performance and extended life.
- 3 Patented self-cooling stator barrel completely encloses and protects its generator from the dirtiest and harshest environments.

Ranked #1 in Reliability

Miller machines are tested and rated at 104° F, nearly 20° or more hotter than the competition. Unlike other engine drives, you'll get full welding and generator power at 100% duty cycle, even at 104° F.

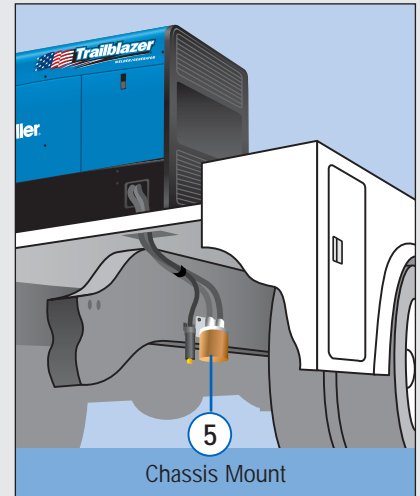
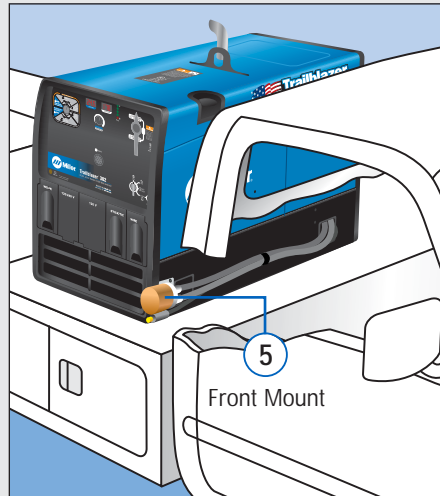
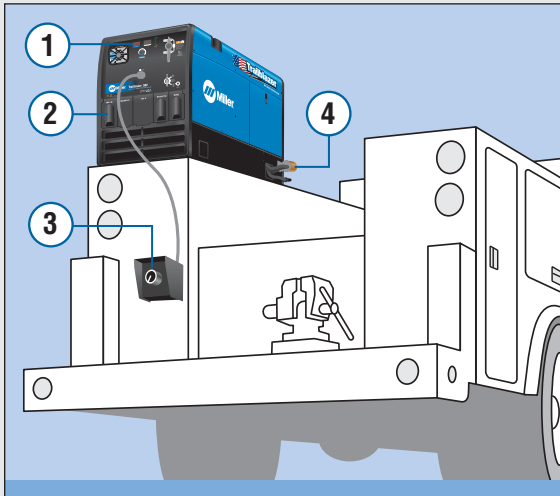


Visit our website for additional information and technical drawings

MillerWelds.com/truck



Designed for Ease of Use and Safety



1 Maintenance Displays
Convenient front panel displays provide data at a glance including:

Trailblazer

- Engine hours
- Hours left before oil change
- Fuel gauge
- Preset and actual weld amperage/voltage

Wildcat

- Engine hours
- Hours left before oil change

Bobcat 225

- Engine hours
- Hours left before oil change

Bobcat 250

- Engine hours
- Hours left before oil change
- Fuel gauge



2 Exclusive Covered Weld Terminals
OSHA required. Bobcats and Trailblazers meet/exceed requirements for jobsite safety.



3 RHC-14 Remote Amperage Control
Remote control makes it easy to adjust the weld amperage at the work area. For use with Trailblazer Series. Comes with 25 ft. cord. #129 340



4 Remote Oil Drain and Filter, Rear Mount
Easy to service when mounted in tight spots. Oil can be changed from the rear of the machine.
Kohler #300 106
Subaru/Robin #300 417



5 Remote Oil Drain and Filter, Front/Chassis Mount
Makes servicing easy when mounted in tight spots. Oil can also be drained from the front of the machine or below the truck, mounted on the chassis.
Kohler #300 236
Subaru/Robin #300 418

Reduced Sound level
(Gas model) 1/3 less noise than previous models. Quietest in its class.

Electric Fuel Pump
#195 214 (Field, gas model)
For high-altitude operation. Improves engine starting and high-output performance.

System Shutdowns
Diesel-powered Bobcats and Trailblazers feature:

- High coolant temperature and low oil pressure shutdowns
- Low fuel shutdown—engine will shutdown before the system runs out of fuel making restarts easy.

Visit our website for additional information and technical drawings

